

Quick Start Guide



Of 4G HD IP Cameras V 2.2

More information can be downloaded at www.ipcam.xin

This manual applies to our 4G series IP cameras.

Please download the correct product CD information at www.ipcam.xin before operating the camera.

Recommended operating the IP camera according to the content below.

Content

1. About camera	3
2. Install the Micro SD card and SIM card	4
3. Connect camera	4
4. View via mobile phone	5
5. View via PC	7
6. Check the SIM card	8
7. Set Micro SD card records	10
8. More info	12

1. About camera

1.1 Product introduction.

This is a 4G digital HD IP camera for monitoring. It connects to the Internet via SIM card to send and receive data, and you can use it to remotely view real-time images from your mobile phone, computer or other device anytime and anywhere, it can save surveillance videos in the Micro SD card, computer or other device such as an NVR. The camera also supports alarm functions such as sending alarm emails, alarming phone message push and other functions.

1.2 Product should contain:

As the picture shows:

IP Camera*1	Power adapter*1
User manual*1	Screws bag*1
Antenna*1or2	



1.2 Interface.



Network cable(LAN) interface is not available for 4G cameras.

2. Install the Micro SD card and SIM card

2.1 Find the Micro SD card and SIM card installation tutorials in the CD.



1-Mobile applications



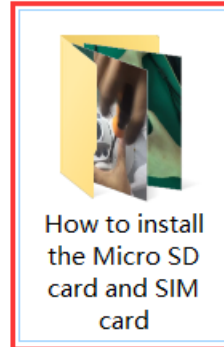
2-PC client management software



3-HIPlayer



4-Frequently asked questions



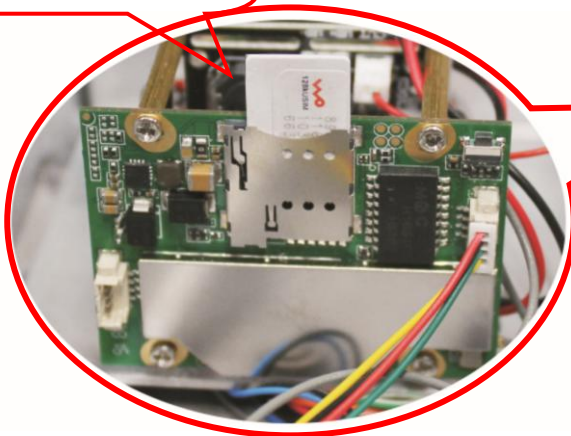
How to install the Micro SD card and SIM card



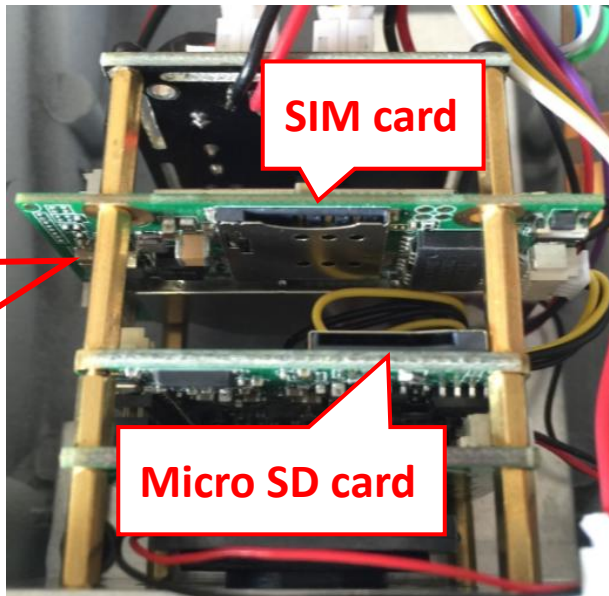
Quick Start Guide Of 4G HD Network Camera

2.2 Insert the Micro SD card and SIM card according to installation tutorials.

Note the direction of the SIM card!



SIM card



Micro SD card

Make sure the camera supports the frequency of the SIM card!

SIM card size type is Nano SIM(12.3mmx8.8mm)!

Please note the direction of SIM card installation!

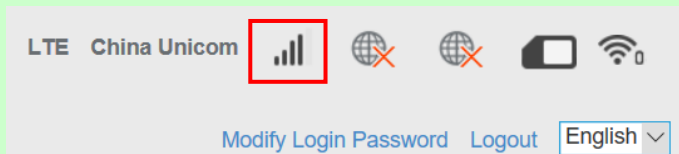
Hot swapping is not supported!

3. Connect your camera

3.1 Install the antenna to camera.



Make sure the 4G signal is sufficient, You can read "6. Check SIM card" to know how to check the 4G signal strength.



3.2 Plug in power adapter and connect to camera.



Please use the standard power supply.

4. View via mobile phone

4.1 Download "CamHi" from Google Play Store / Apple App Store or scan the QR code below to get APP information.

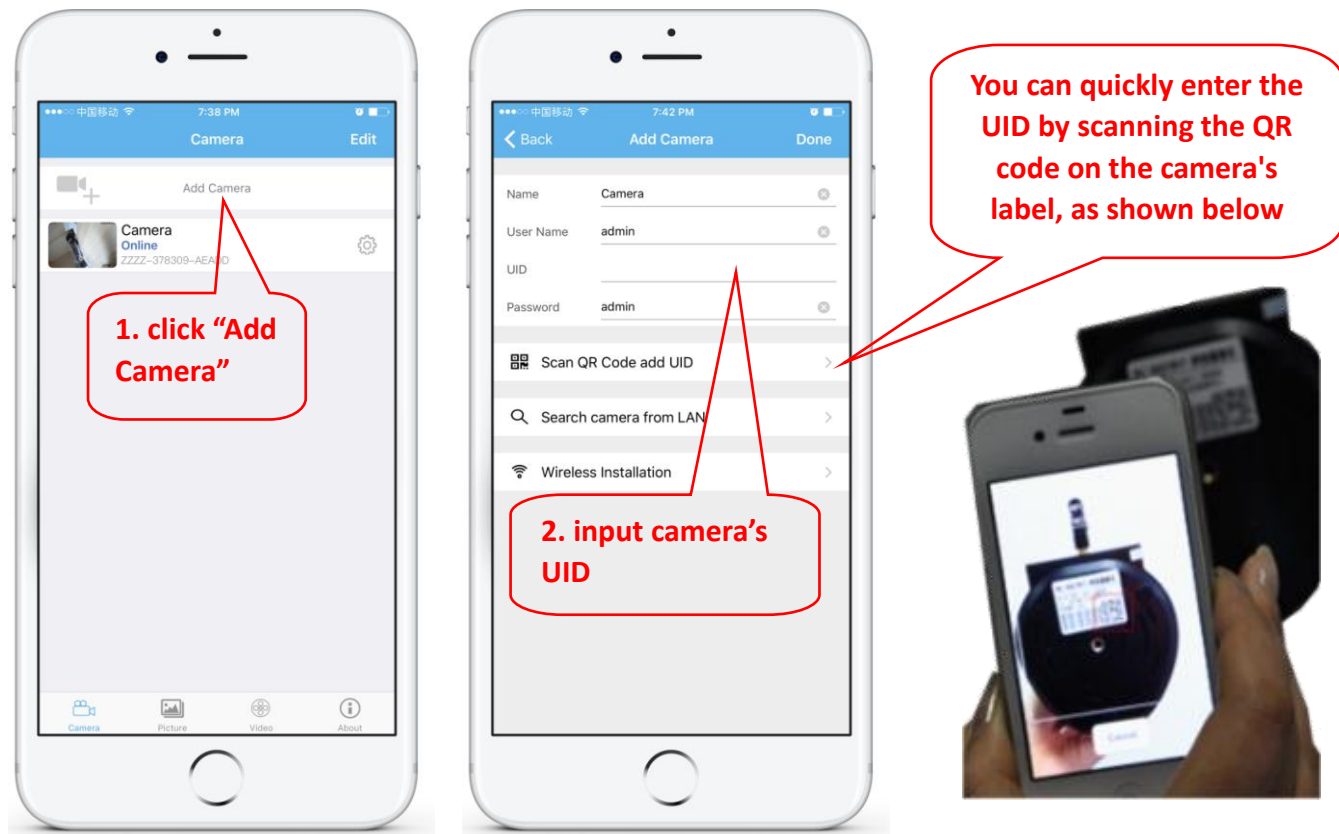


Android

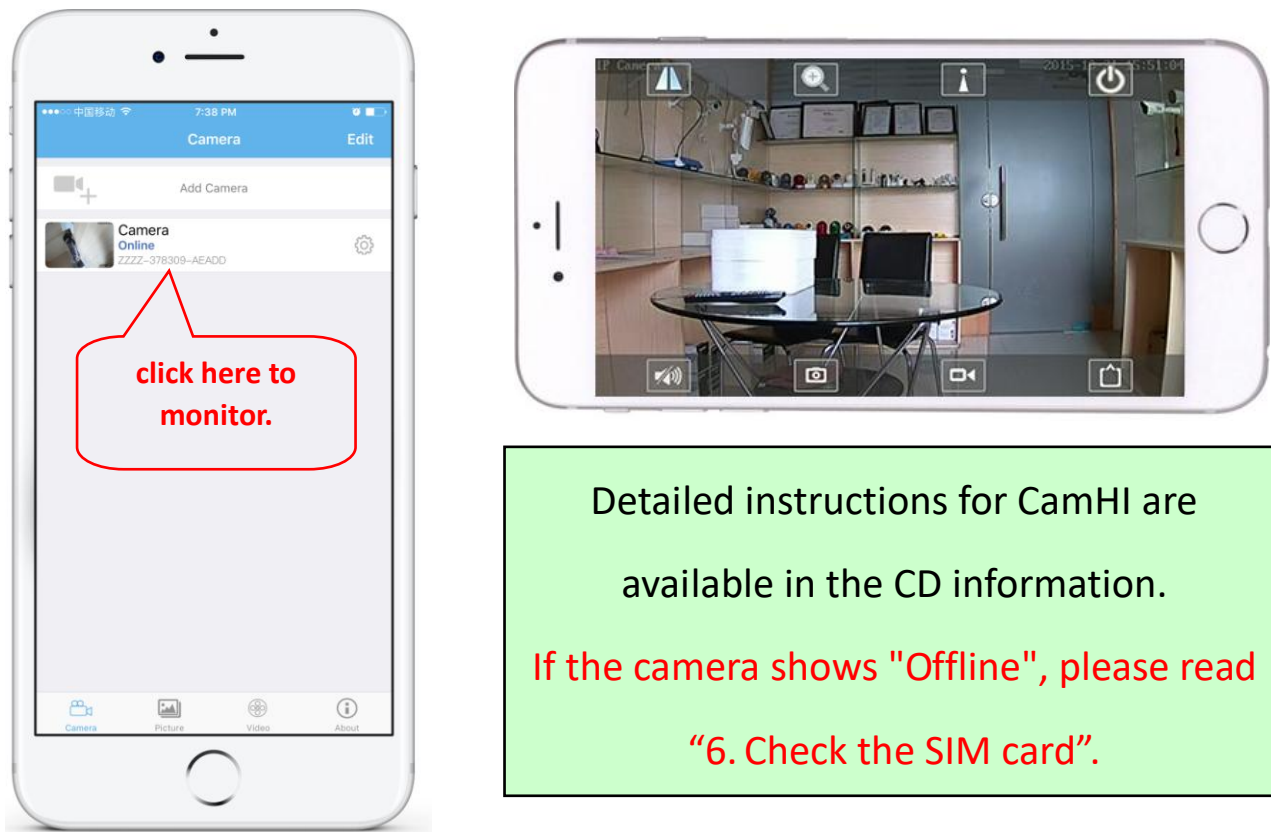


IOS

4.2 Run APP and Add Camera.

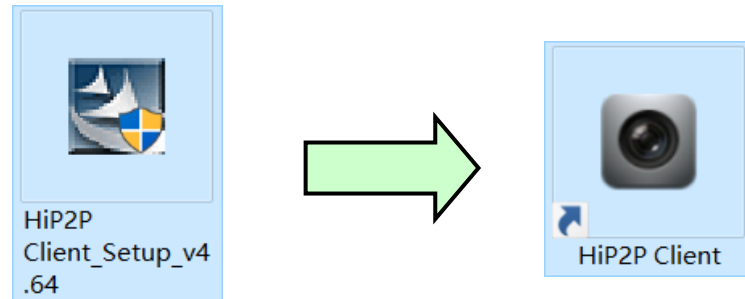


4.3 After adding the camera, click online camera to view real-time image.



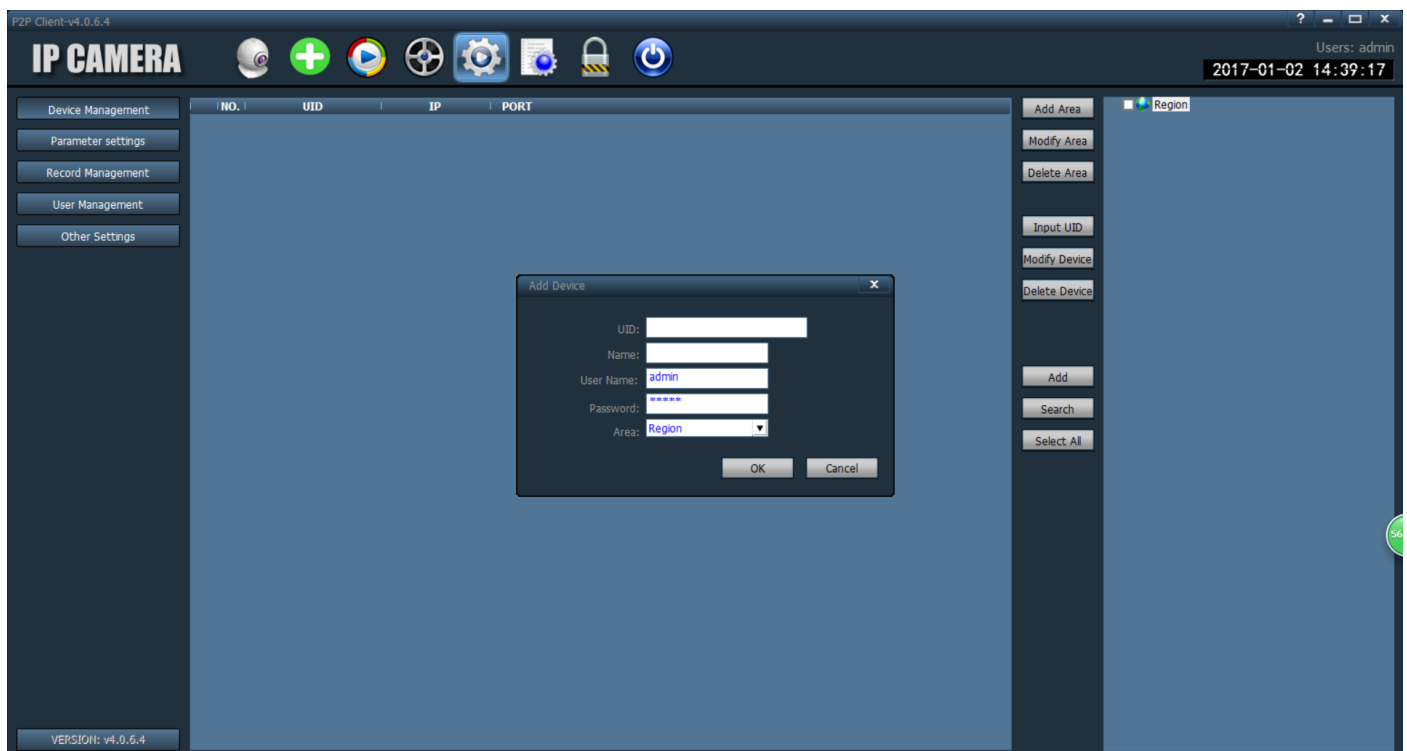
5. View via PC

5.1 Install the “HiP2P Client_Setup” from the CD, then run “HiP2P Client”.



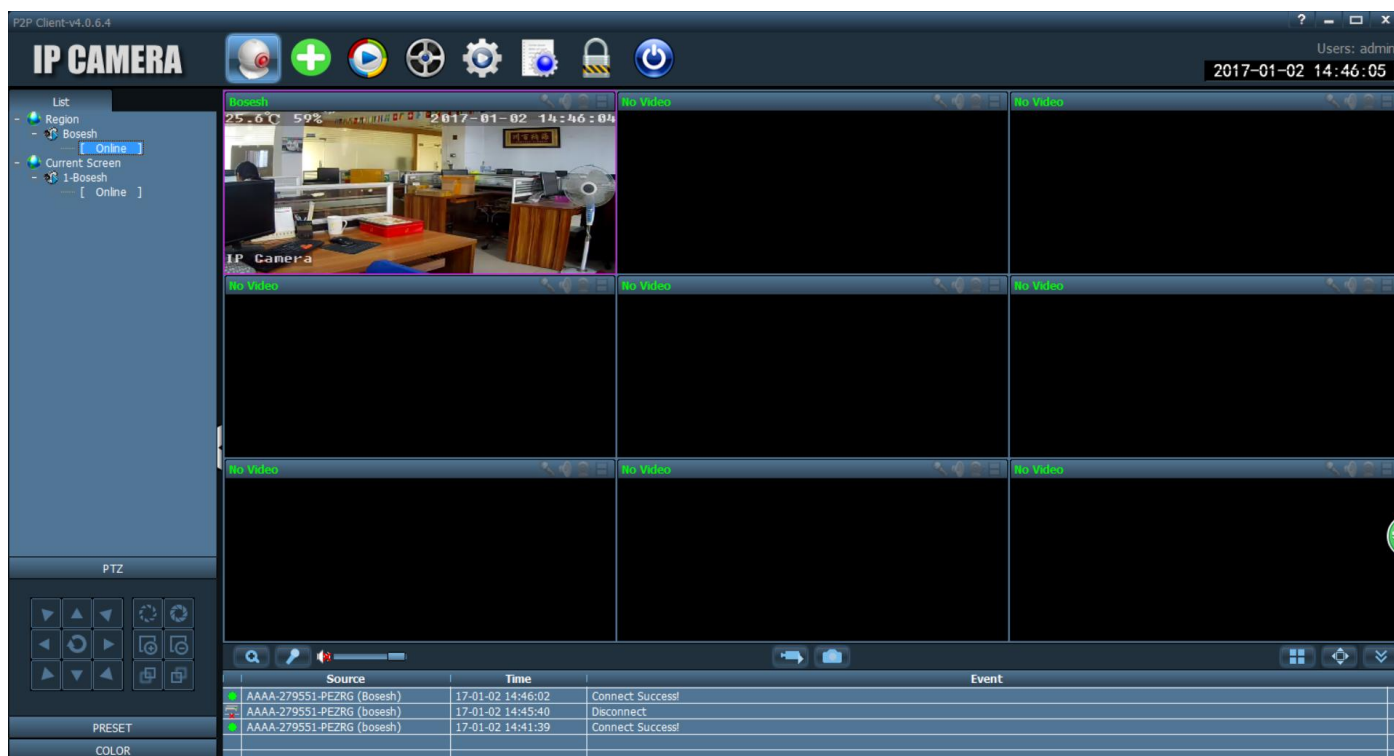
PC client only supports Windows operating system.

5.2 Enter the “Config” interface and click “Input UID” to input the camera UID, and then add the camera.



5.3 Double click camera to view real-time image.

Quick Start Guide



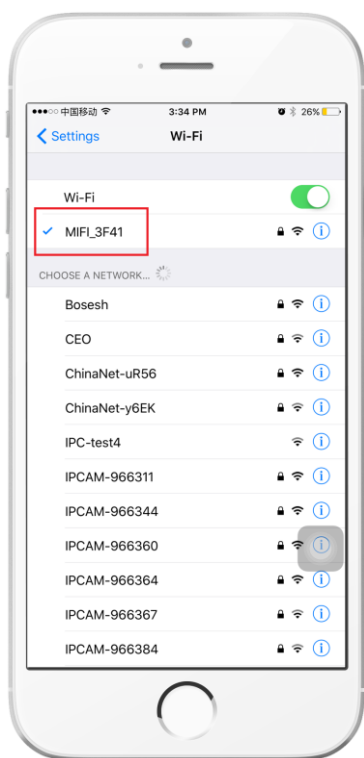
CMS installation packages and instructions are available in the CD information.

If the camera shows "Offline" or "Connect Failure!", please read "6. Check the SIM card".

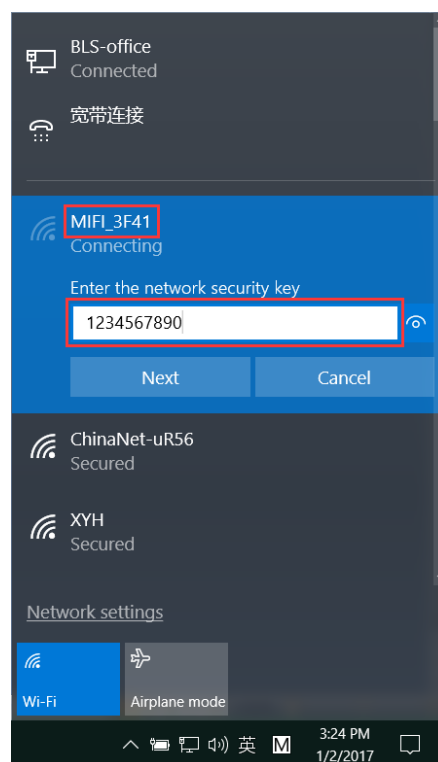
6. Check the SIM card

6.1 You can find a hot spot beginning with "**MIFI_**" when the camera starts working, use the mobile phone or PC to connect the hot spot "**MIFI_******", the hot spot password is "**1234567890**", as shown blow.

Quick Start Guide

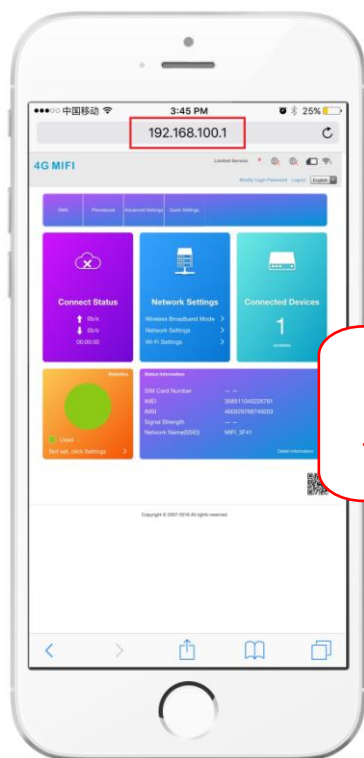


mobile phone

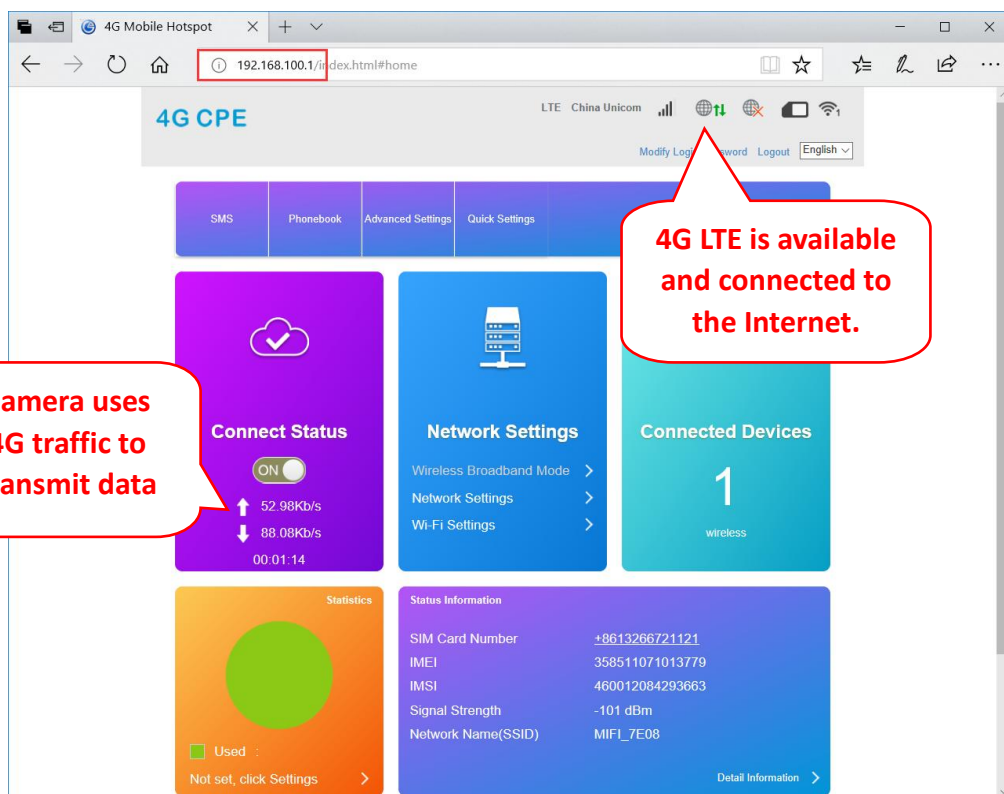


PC

6.2 Access “192.168.100.1” through the browser, the page password is “**admin**”, you can check the SIM card information on this page.



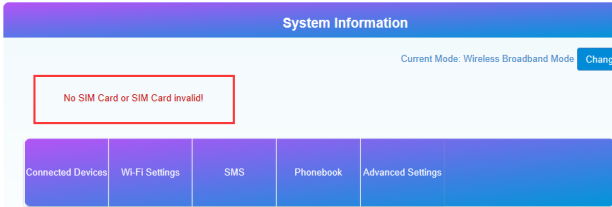
mobile phone



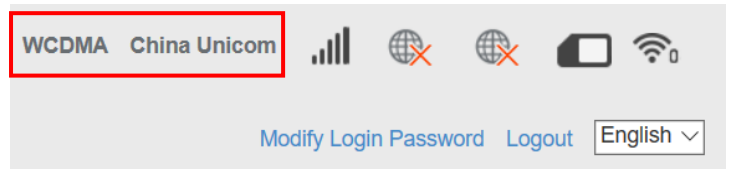
PC

6.3 If camera display is offline, please note the following:

① Damaged card or wrong installation direction when prompted "**No SIM Card or SIM Card invalid!**", as shown below 1).



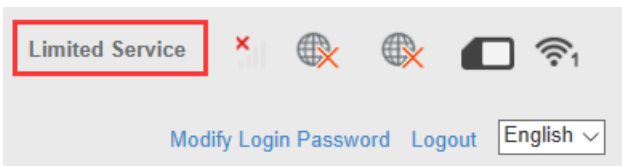
1)



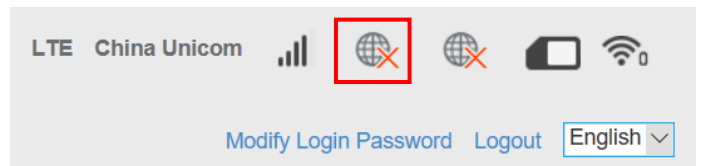
2)

② SIM card arrears or SIM card 4G is not available when displaying **non-4G (LTE)**, as shown above 2).

③ The camera does not support the frequency of the SIM card when prompted "**No Service**" or "**Limited Service**", as shown below 3).



3)



4)

④ Displaying **4G (LTE)** but **Internet is not available**, as shown above 4), the camera does not recognize the correct APN setting, you need to get the correct APN information from the 4G operator and set it up manually.

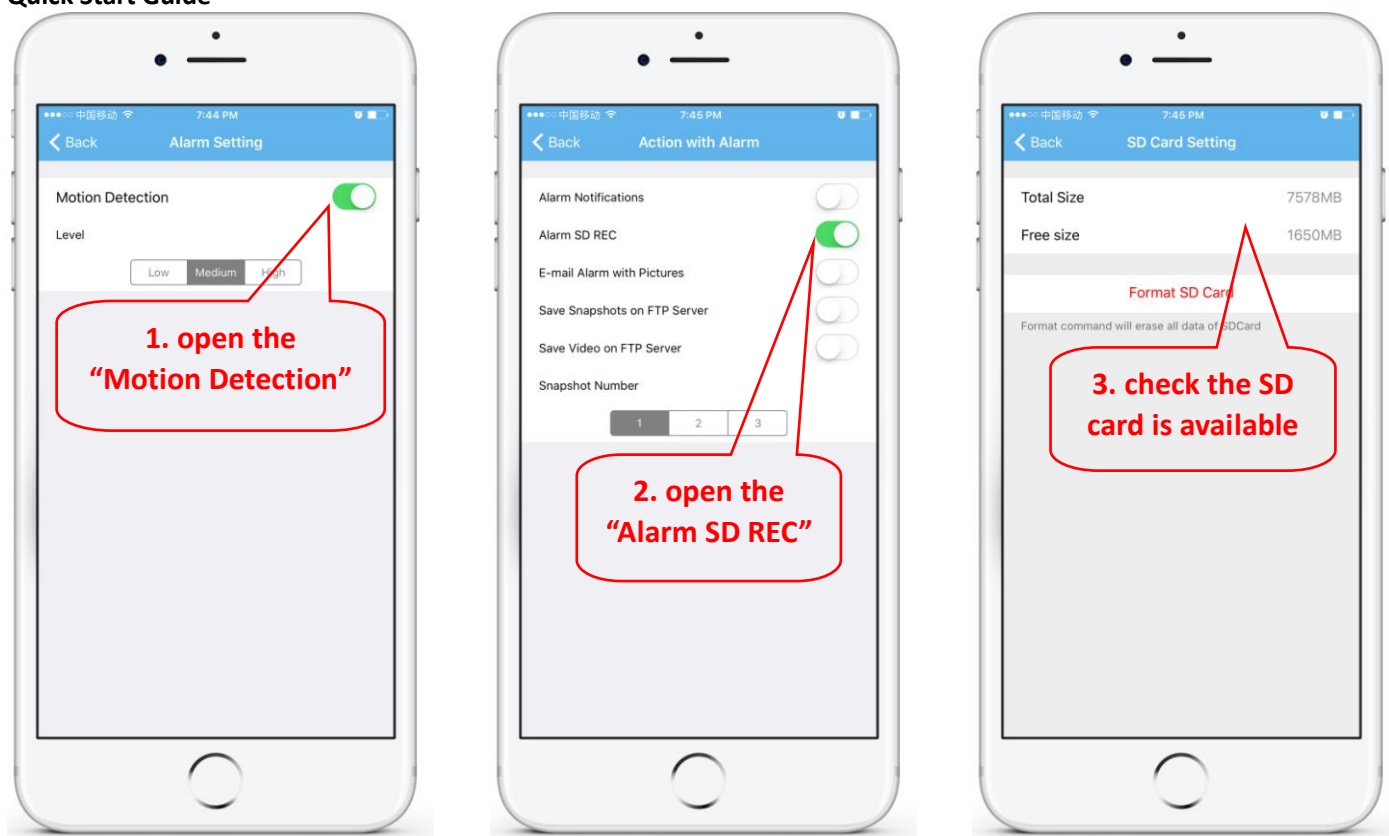
More help documentation are available in the CD information.

If your problem still cannot be solved, please contact us for help.

7. Set Micro SD card record

7.1 Set motion detection alarm recording on the phone.

Quick Start Guide

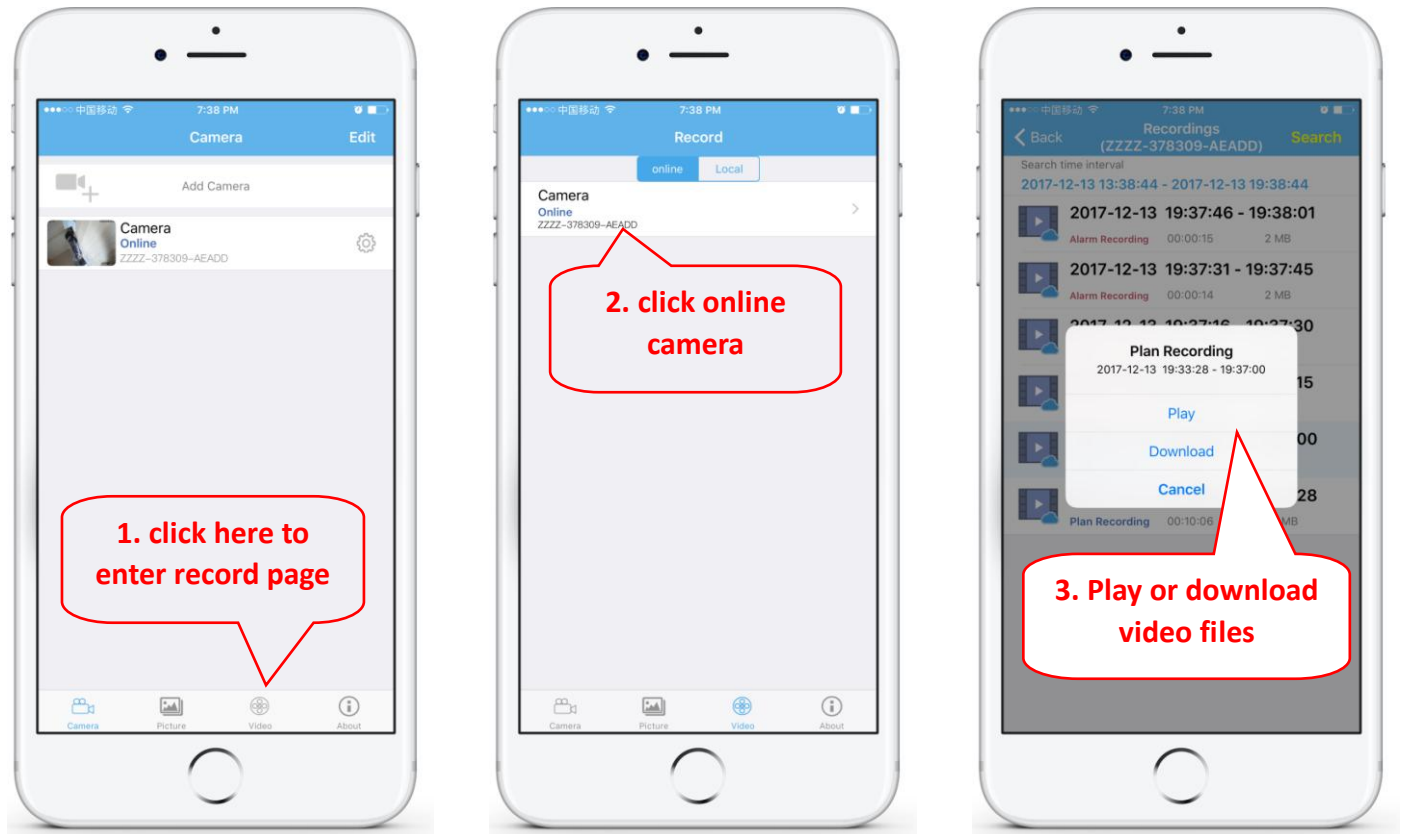


Motion detection alarm recording is recommended when the Micro SD card is small.

7.2 Set schedule recording on phone.



7.3 Playback record on phone.



These parameters can be set in more detail via IE browser on the PC!

8. More info

This manual is to help customers to know and use the camera quickly, For detailed instructions and video tutorials please refer to the content of CD information at www.ipcam.xin.

This manual may have descriptions and operations that do not match the product, If you have any questions or need technical support Please feel free to contact us or our dealers.