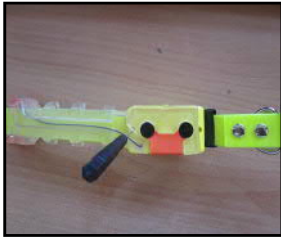


# GPS Dog Tracker APP-100 Manual

## SIM card Installation

Deactivate the PIN and any call transfer; the telephone number of the SIM card should be displayed (not withheld) and activate the GPRS on the SIM card.



Unscrew the two screws carefully, with the screwdriver provided in the package. Make sure to always use the screwdriver provided. Open the plastic cover carefully, by paying attention to the battery wires and insert the SIM card as shown on the photo above. Then, close tight the plastic cover and screw the two screws. Make sure you close the plastic cover tight so the tracker is waterproof.

## LED CODE

CHARGING PROCESS	LED STARTS FLASHING FAST FEW SECS AFTER CONNECTED TO CHARGER
CHARGING COMPLETE	LED TURNS ON CONTINUOUSLY
LOW BATTERY INDICATION	LED FLASHES SLOWLY 1 SEC ON / 1 SEC OFF
ACTIVATION/ TURNING ON	LED FLASHES FAST AND ACCELERATING 5 TIMES
DEACTIVATION/ TURNING OFF	LED FLASHES DECELERATING 5-6 TIMES
SEARCHING GSM	FLASHES EVERY 64ms ON / 800ms OFF
CONNECTING TO GSM	FLASHES EVERY 64ms ON / 3000ms OFF
CONNECTING TO GPRS	FLASHES EVERY 64ms ON / 300ms OFF
CONNECTING TO GPS	FLASHES EVERY 64ms ON / 200ms OFF
SLEEP MODE	FLASHES ONCE EVERY 30 SEC
RESET MODE	FLASHES 5-6 TIMES RANDOMLY THEN TRIES TO RECONNECT

## GOOGLE LINK FUNCTION

SEND SMS	FACID, 123456, AUTHORIZE, 1=+(COUNTRY CODE PHONE NO)
DEVICE REPLY	FACID authorize ok! 5 nums updated
MAKE A CALL	DEVICE REPLIES WITH A GOOGLE LINK SMS <b><a href="http://maps.google.com/maps?">http://maps.google.com/maps?</a></b>

## SMS FUNCTION

SEND SMS	FACID,123456,AUTHORIZE,1=+(COUNTRY CODE PHONE NO)
DEVICE REPLY	FACID authorize ok! 5 nums updated
SEND SMS TO GET LOCATION	FACID,123456,SMS,FAST
DEVICE REPLY	lat:50.123456N,long:49.123456E,SP:0.00,HD:000.00,10/02/1 6,09:40:13,GPS:10,b=86%,Nil-Alarms
SEND SMS TO GET MULTIPLE LOCATIONS	FACID,123456,LOC,I=240,T=04;
DEVICE REPLY	FACID loc ok! I=240, T=04;
DEVICE SENDS	LOCATION SMS EVERY 240 SEC, 4 TIMES, THEN STOPS

### **GPRS FUNCTION**

SEND SMS	FACID,123456,AUTHORIZE,1=+(COUNTRY CODE PHONE NO);
DEVICE REPLY	FACID authorize ok! 5 nums updated
SEND SMS	FACID,123456,GPRS,ADDR=5.189.191.57,PORT=5024,NAME=USER NAME,PASS=PASSWORD,APN=APN,MODE=0;
DEVICE REPLY	FACID GPRS ,OK!
SEND SMS TO GET MULTIPLE LOCATIONS	FACID,123456,LOC,I=240,T=04;
DEVICE REPLY	FACID,123456,LOC,I=60,T=999;
DEVICE SENDS	FACID loc ok! I=60, T=999

### **MICROPHONE FUNCTION**

SEND SMS: **FACID,123456,CALLBACK;**

Device will make a call to Authorize number, you accept the call and you can hear the sound from device microphone.

### **STORAGE POINTS FUNCTION**

If device is in area without GSM signal the messages will storage in device memory up to 1024 messages (with coordinates) and sending to authorized number once the device registered again to GSM network user can stop/play/erase the stored messages with the following commands

<b>FACID,123456,STOREDMSG,ERASE;</b>	<b>erase all the messages</b>
<b>FACID,123456,STOREDMSG,PLAY;</b>	<b>starts playback and delays PSM until all played</b>
<b>FACID,123456,STOREDMSG,STOP;</b>	<b>stop playback and allows PSM</b>
<b>FACID,123456,STOREDMSG,COUNT;</b>	<b>gets count of how many messages saved</b>

**\*PSM=Power Save Mode**

**\*\*Device start play all the stored messages by it self once get GSM signal**

### **Tracker Activation / Deactivation**

Use the GPS tracker in an open area.

Hold the magnet for 1 sec near the LED in order to turn the tracker on. Then, remove the magnet. Now, the GPS tracker is activated. The red LED initially flashes very quickly, then the LED is on for about 1 second, and off for 3 seconds. When the GPS tracker turns on for the first, it might need 1-2 minutes to be synchronized with the GPS satellites at the specific area. Send an SMS with LOC command in order to be synchronized with the GPS satellites.

Hold again the magnet for 1 sec near the LED in order to turn the tracker off. Then remove the magnet. Now, the GPS tracker is deactivated.

When the tracker is switched on and the battery level is under 20%, the red LED flashes steadily.

### **Power Save Mode**

The GPS tracker is always on power save mode function. If the device is not moving, it stops sending any info to the mobile; this happens after 120 sec since it has stopped moving. The led stops flashing until the tracker starts moving again.

This function ensures longer battery life (max 300 hours).

### **WHEN THE DEVICE GOES TO POWER SAVE MODE**

<b>1</b>	<b>IF THE DEVICE DOES NOT MOVE FOR 120 SECONDS</b>
<b>2</b>	<b>IF IT DOES NOT RECEIVE SMS, MISSED CALL OR DATA</b>
<b>3</b>	<b>IF NO ALARM TRANSMISSION IS PENDING</b>



### **Tracker charging**

The tracker should be charged while is switched on. Hold the magnet for 1 sec near the LED in order to turn the tracker on. Then, remove the magnet. Now, the GPS tracker is activated. The LED flashes quickly. Lift the orange protective cover and connect the charger as shown on the photo below. When connecting the charger the LED flashes very quickly. Charge the GPS tracker for 2-3 hours. When the battery is charged the red LED is on continuously. After charging is complete, disconnect the charger and lower down the orange protective cover. Hold again the magnet for 1 sec near the LED in order to turn the tracker off. Then remove the magnet. Now, the GPS dog tracker is deactivated.

The battery autonomy is max 400 hours, depending on the setting of the auto report function.

## Tracker setting for SMS function

In order to receive an SMS with a **Google map** link of the tracker's location do the following:  
Send the following SMS to the tracker's telephone number to authorize it on your mobile:

**FACID,123456,AUTHORIZE,1=+Authorized mobile number;**

**Authorized mobile number:** Write your mobile number with no gaps, including the country code (do not put any leading zeros to the country code).

The tracker replies back "FACID authorize ok! 1 nums updated"

Up to 5 mobile numbers can be authorized by sending the following SMS command:

**FACID,123456,AUTHORIZE,1=+Authorized mobile number,2=+Authorized mobile number,3=+Authorized mobile number,4=+Authorized mobile number,5=+Authorized mobile number;**

The tracker replies back "FACID authorize ok! 5 nums updated"

Send the following SMS command to the tracker when it is used or the first time, so it can synchronize with the satellites at the specific area. It may need 1-2 minutes to be synchronized with the satellites. Make sure you always use the GPS dog tracker outside in an open area.

**FACID,123456,LOC,I=240,T=04;**

The tracker replies: FACID loc ok! I=240, T=04;

By sending this command 4 SMS are received, one SMS every 4 minutes to the authorized mobile phone, with the coordinates.

Then if the authorized mobile phone calls the telephone number of the tracker, it receives an SMS with a **Google map link** of the tracker's location, for example:

**<http://maps.google.com/maps?q=loc:50.123456,49.123456&09/12/14,232827.000,CallReply>**

When pressing the specific link above, it redirects to Google Maps, and shows a static photo of the tracker's location. A data plan is needed on the authorized mobile phone.

Send the following SMS command to the tracker in order to receive on the authorized mobile phone an SMS with the coordinates of the tracker's location:

**FACID,123456,LOC,I=60,T=999;**

The tracker replies: FACID loc ok! I=60, T=999

I = Time interval of the SMS in seconds

T = Number of SMS (999 is infinite)

With the specific command an SMS with the coordinates is received to the authorized mobile phone every 60 seconds as follows:

**lat:50.123456N,long:49.123456E,SP:0.00,HD:305.10,10/02/16,09:40:13.000,GPS:10,b= 86%,Nil-Alarms**

**lat, long** are the coordinates

**SP** is the speed

**HD 305.10** is the Azimuth

**10/02/16** is the date

**09:40:13** is the hour in GMT. It is 09:40 and 13 seconds

**GPS: 10** is the number of GPS satellites fixed

**b=86%** is the battery level

**Nil-Alarms** means no SMS alarms are activated

**Even if the GPS tracker is switched off, it remembers the commands sent; therefore, the next time the tracker switches on, it starts sending every 60 seconds an SMS with the coordinates.**

In order to receive an SMS every 3 minutes for 10 times send the following SMS command to the tracker:

**FACID,123456,LOC,I=180,T=10;**

In order to revert the tracker to factory settings, send the following SMS command:

**FACID,123456,DEFAULT;**

In this way any SMS commands sent previously, are canceled. With this command the device reverts to factory settings.

In order to revert the GPS tracker to its factory settings do the following:

While the GPS tracker is switched on, hold the magnet for 60 seconds near the LED. Then, remove the magnet. The LED flashes 5 times; settings have been reverted. In order to use the GPS tracker, authorize it again to a mobile phone number, and send the desired SMS command to program it.

## TIME ZONE SETTING

The default setting is GMT. To change the time zone at GMT+2 for example, send the following SMS command to the tracker:

**FACID,123456,TIME\_ZONE,V=+8;**

The tracker replies back "FACID time zone ok!"

Each V=+1, the time advances 15 minutes. So to advance the time 2 hours put a value of +8 for V. For GMT -2 for example, a value of -8 for V.

## CHANGING THE TRACKER PASSWORD

In order to change the default password (123456) of the tracker to 123 for example, send the following SMS command to the tracker:

**FACID,123456,PASSWORD,V=123;**

V is the value for the new password.

The tracker replies back "FACID password ok!"

Then, send the SMS commands to the tracker as FACID,123, etc.

## SMS ALARMS

### OVER-SPEED ALARM

The tracker has an overs-peed alarm. To activate the specific function send the following SMS command to the tracker:

**FACID,123456,OV,L=50;** L=50 means speed limit 50km/h;

The tracker replies back "FACID ov ok! En:1 Lim=1"

So if the tracker passes the speed limit of 50 km/h, an SMS is received to the authorized phone as follows:

**lat:50.123456N,long:49.123456E,SP:0.00,10/12/14,094013.000,GPS:10,b=86%,OS**

At the end of the SMS is written **OS** which means **OVER-SPEED**. When the speed is less than the limit of 50 km/h, the following SMS is received:

**lat:50.123456N,long:49.123456E,SP:0.00,10/12/14,094013.000,GPS:10,b=86%,LS**

At the end of the SMS is written **LS** which means **LOW-SPEED**.

In order to cancel the overs-peed alarm, send the following SMS command to the tracker:

**FACID,123456,OV;** The tracker replies back "FACID ov ok! En:0 Lim=0"

### VIBRATION ALARM

The tracker has a vibration alarm. To activate the specific function send the following SMS command to the tracker:

**FACID,123456,VIB,L=5;** The tracker replies back "FACID vib ok! En:1 Sens=5"

L is the sensitivity. Any number from 1-10 can be used. 1 is lowest sensitivity, 10 is highest sensitivity.

When the tracker receives a vibration, an SMS is received to the authorized phone as follows:

**lat:50.123456N,long:49.123456E,SP:0.00,10/12/14,094013.000,GPS:10,b=86%,VB**

At the end of the SMS is written **VB** which means **VIBRATION**.

In order to cancel the vibration alarm, send the following SMS command to the tracker:

**FACID,123456,VIB;** The tracker replies back "FACID vib ok! En:0 Sens=0". In order to cancel the vibration alarm put a value 0 for L.

### CIRCULAR MOVEMENT ALARM

The tracker has a circular movement alarm. To activate the specific function send the following SMS command to the tracker:

**FACID,123456,MOVE,L=200;** L is the radius in meter

The tracker replies back "FACID mov ok!"

This function creates a circular area based on the last position of the tracker, by setting the desired radius. The last position is the center of the circle. If the tracker moves out, or moves in the specific area, it sends the following SMS to the authorized phone:

**lat:50.123456N,long:49.123456E,SP:0.00,10/12/14,094013.000,GPS:10,b=86%,MO**

At the end of the SMS is written **MO** which means **MOVES OUT**.

The tracker moved out of the defined circular area.

**lat:50.123456N,long:49.123456E,SP:0.00,10/12/14,094013.000,GPS:10,b=86%,MI**

At the end of the SMS is written **MI** which means **MOVES IN**.

The tracker moved in the defined circular area.

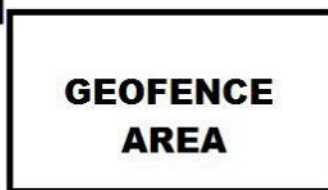
In order to cancel the circular movement alarm, send the following SMS command to the tracker:

**FACID,123456,MOVE;** The tracker replies back "FACID mov ok!"

### GEO-FENCE ALARM

The tracker has a geo-fence alarm. The geo-fence creates an area by setting the coordinates of two points as shown on the following photo:

**POINT 1**



**POINT 2**

To activate the specific function send the following SMS command to the tracker:

**FACID,123456,GEOFENCE,1=112.000000e/21.000000n,2=111.800000e/21.200000n;**

**1= coordinates for Point 1 ( 112.000000e) is longitude, (21.000000n) is latitude**

**2= coordinates for Point 2 ( 111.800000e) is longitude, (21.200000n) is latitude**

The tracker replies back "FACID geo-fence ok!"

If the tracker moves out, or moves in the geo-fence area, it sends the following SMS to the authorized phone.

**lat:50.123456N,long:49.123456E,SP:0.00,10/12/14,09:40:13,GPS:10,b=86%,GO**

At the end of the SMS is written **GO** which means **GEO-FENCE OUT**.

The tracker moved out of the geo-fence area.

**lat:50.123456N,long:49.123456E,SP:0.00,10/12/14,094013.000,GPS:10,b=86%,GI**

At the end of the SMS is written **GI** which means **GEO-FENCE IN**.

The tracker moved in the geo-fence area.

### **BATTERY ALARM**

If the battery level is under 20%, an SMS is received to the authorized phone as follows:

**lat:50.123456N,long:49.123456E,SP:0.00,10/12/14,094013.000,GPS:10,b=20%,LB**

At the end of the SMS is written **LB** which means **LOW BATTERY**.

### **Tracker setting for GPRS and function with Android application**

Send the following SMS to the tracker's telephone number in order to authorize it on the mobile:

**FACID,123456,AUTHORIZE,1=+Authorized mobile number;**

Authorized mobile number: Write the mobile number with no gaps, including the country code (do not put any leading zeros to the country code).

The tracker replies back "FACID authorize ok! 1 nums updated"

Now, send the following SMS command to the tracker, to retrieve the 15-digit IMEI number which will be used later on:

**FACID,123456,QUERY,STATUS;** The tracker replies back "FACID query ok! IMEI:861001005220644"

Now send the following SMS to the tracker in order to program it for GPRS mode, and to connect to our server. Make sure that you know the GPRS settings of the mobile network provider. APN (Access Point Name), username (if required), password (if required).

**FACID,123456,GPRS,ADDR=5.189.191.57,PORT=5024,NAME=USERNAME,PASS=PASSWORD,APN=APN,MODE=0;**

The tracker replies: FACID GPRS ok!, Now send the following SMS to the tracker:

**FACID,123456,LOC,I=60,T=999;** The tracker replies: FACID loc ok! I=60, T=999

If it is the first time that the tracker is switched on, it may need 10-20 minutes to be synchronized with the satellites at the specific area.

Now, register the tracker to the Hunter Android application on the mobile.

To install the application to the Android mobile, save the Hunter\_Software.apk file, provided by us via e-mail, on the SD card of your mobile phone. Open the file browser on the Android phone, browse the folder containing the Hunter\_Software.apk file and launch the file. Follow the instructions for installation and the app will be installed on the phone.

If the installation fails, do the following and then install the application:

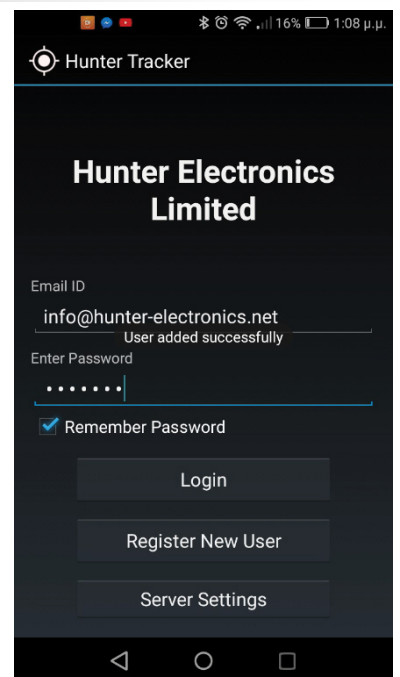
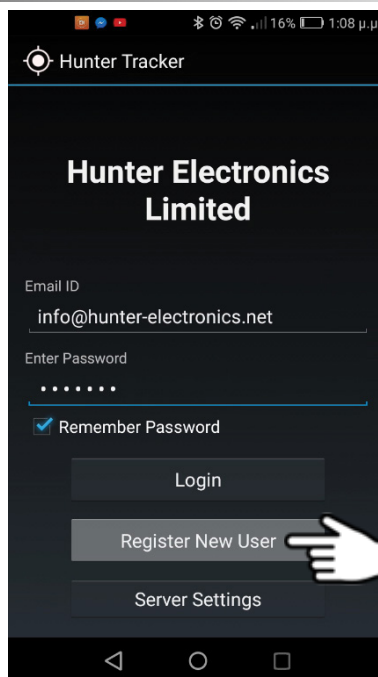
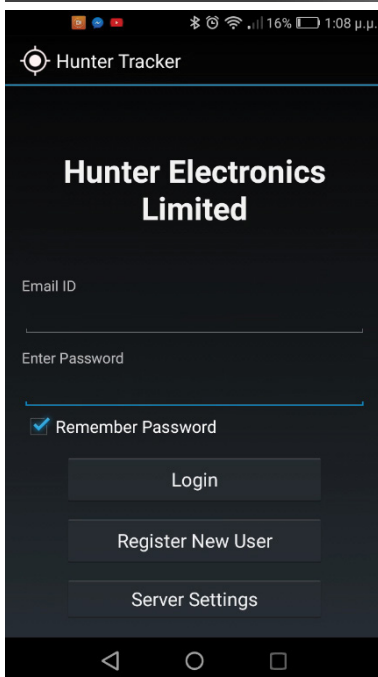
Go to: **Settings > Applications > Unknown sources** Allow installation of non-Market applications

After the installation of the application, go to the menu of the Android mobile phone where the applications are shown, and click on the Hunter Software application. Then, a login screen appears, write the username and password provided by us.

Now, follow the steps below to register the tracker:

# GPS TRACKING SYSTEM MANUAL

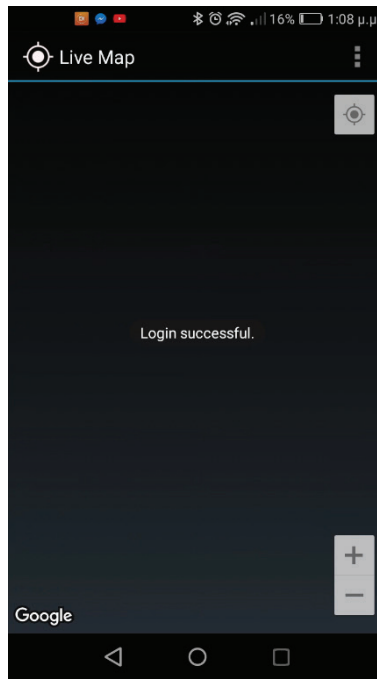
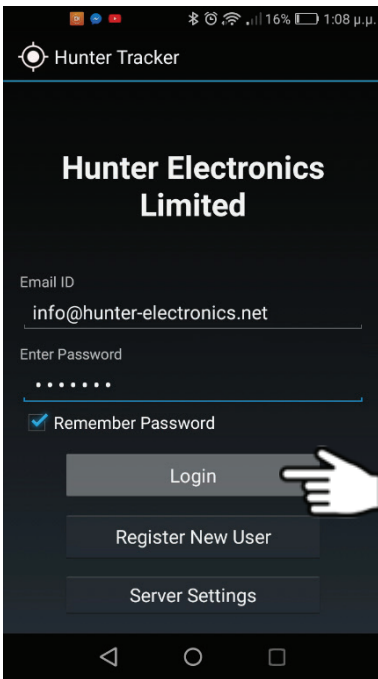
## REGISTER SCREEN



**Register** with your e-mail and a password of your choice.

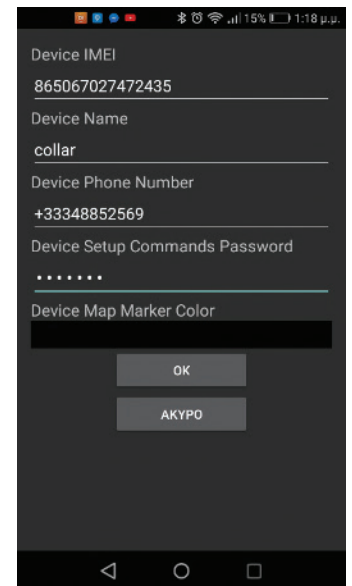
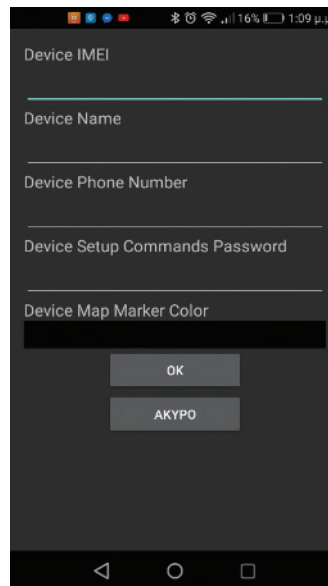
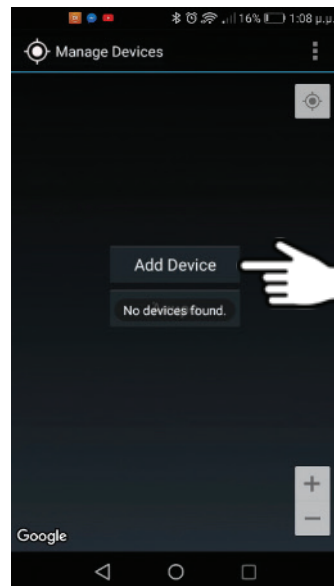
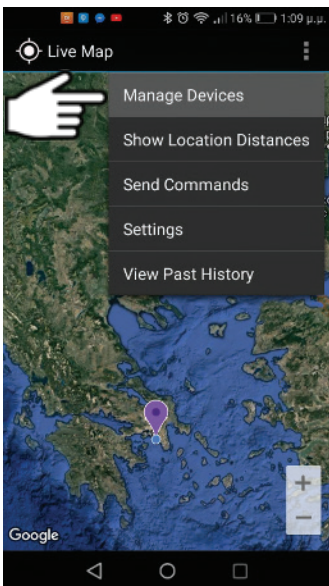


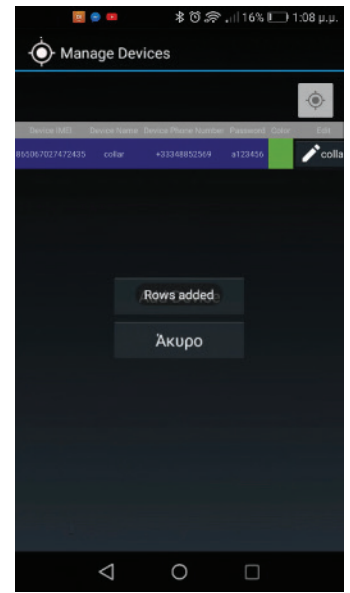
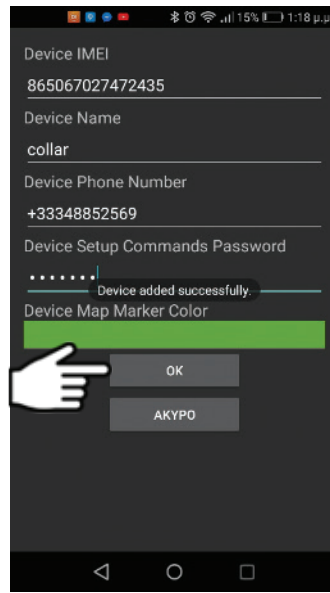
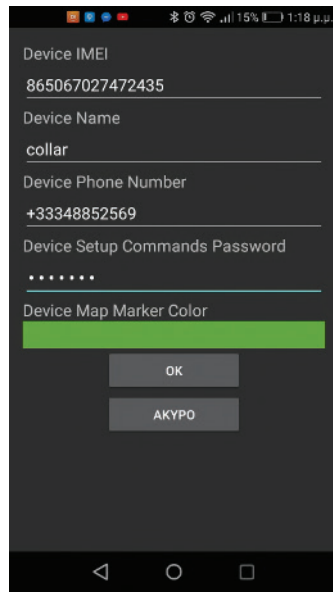
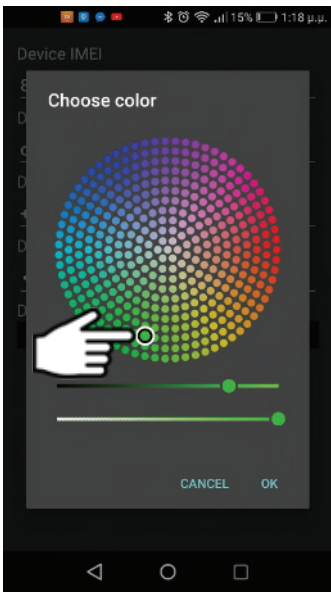
## LOGIN SCREEN



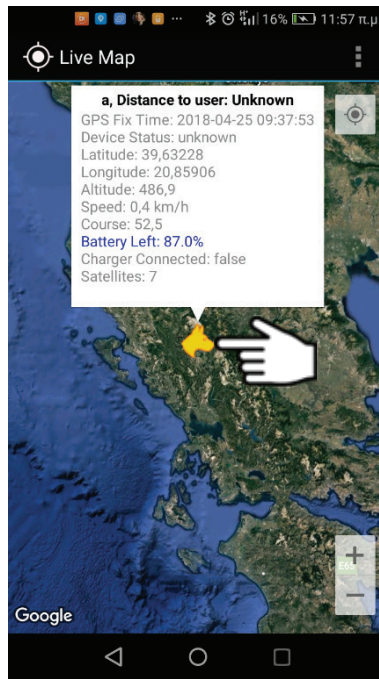
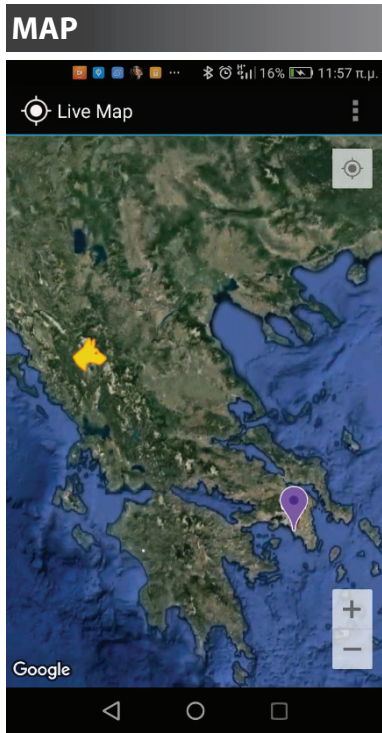
After registering, you can **Login** with your e-mail and your password.

## MANAGE DEVICES



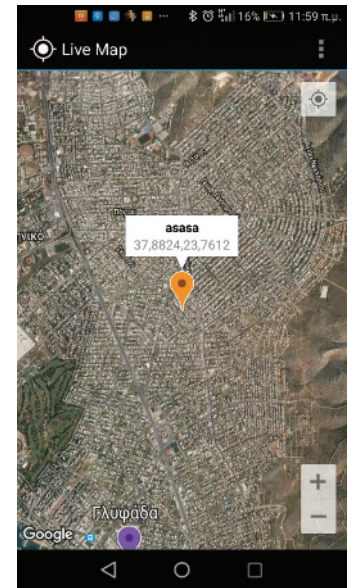
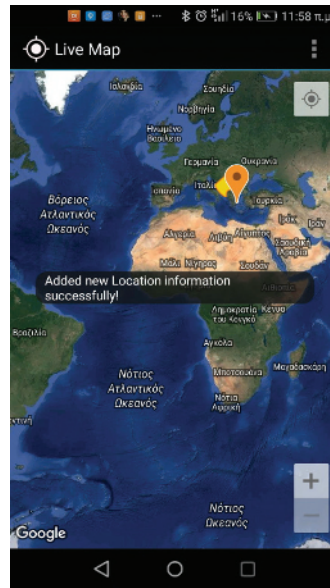
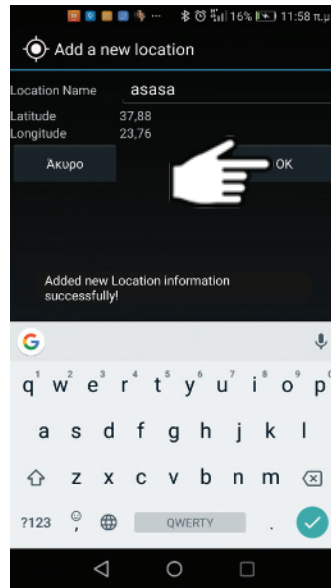
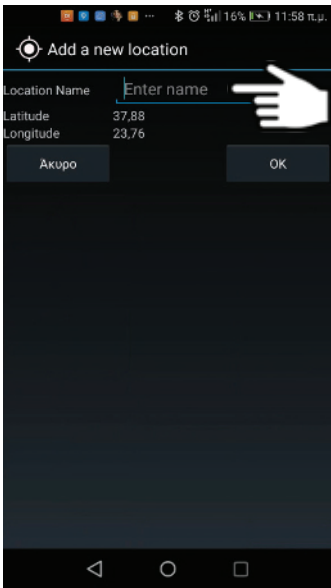


By pressing **Manage Devices** you can add the trackers.  
The **Device Setup Commands Password** is: **a123456**  
Send the **Query Command** to obtain the **IMEI**.



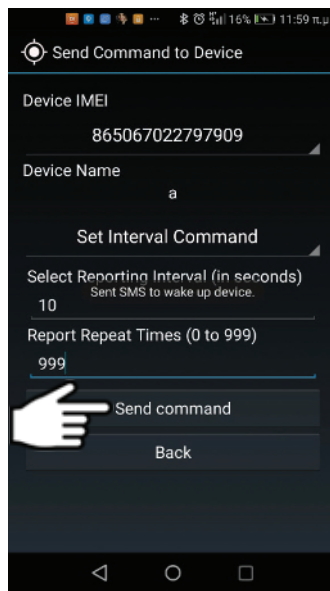
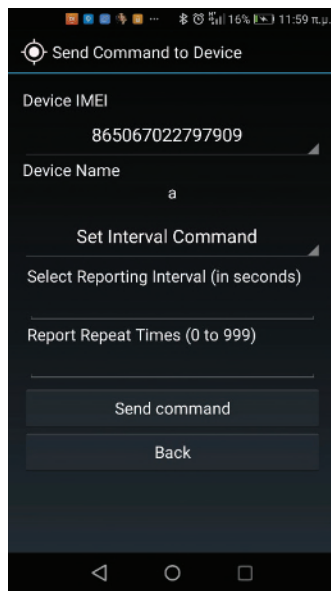
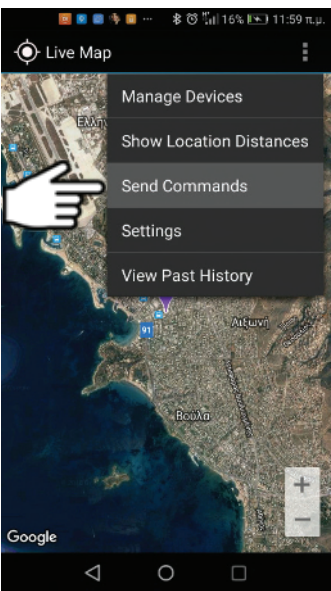
By pressing **dog's head**, you can view info regarding the distance, coordinates etc.

## ADD LOCATION



On **Add Location**, you can save your locations.

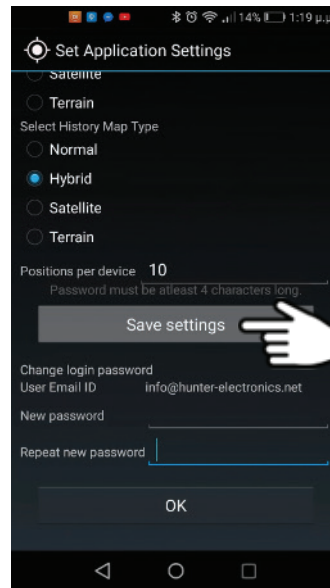
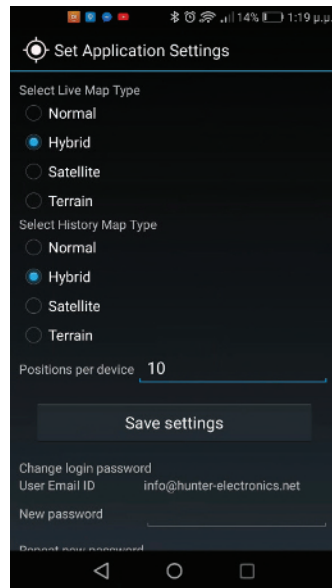
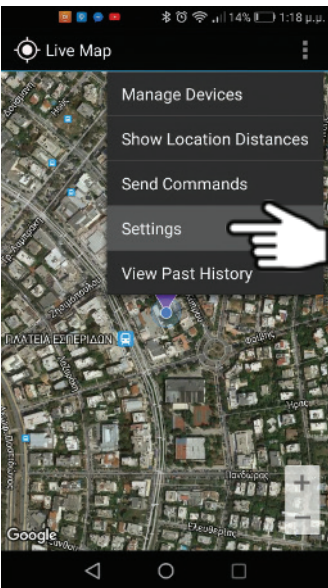
## COMMANDS



On **Send Commands** section, you choose Interval Time and Repeat.

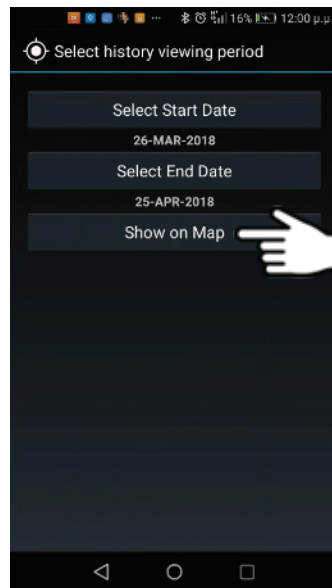
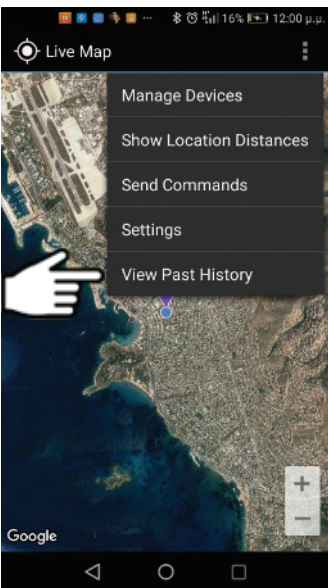


## SETTINGS



On **Settings** you can change map's view type etc.

## HISTORY



On **View Past History**, you can check the dog's route.

### Quick Start Guide for GPRS setting

- Deactivate the PIN on the tracker's SIM Card. Call display should be on. Activate GPRS for functioning on Android Application. Insert the SIM Card to the tracker.
- **NOW** connect the battery.
- Charge the tracker and your Android mobile phone.
- Obtain the GPRS settings from your mobile network provider.
- Send SMS command to authorize your mobile phone to the tracker. Then send SMS command to obtain the IMEI.
- Send SMS command to the tracker to program it for GPRS connection to our server.
- Send the LOC command.
- Login to our application with the username and password.
- Register the tracker to the application.

**Warranty:** The tracker has one-year warranty. Damages caused by mechanical stress, any damages on the belt and failure of the built-in rechargeable battery, are not covered by the warranty.