

PAPERANG P2

service@paperang.com

www.paperang.com

NOTE:

This device complies with part 15 of the FCC Rules. Operation is subject to the following two conditions:

- (1) This device may not cause harmful interference, and
- (2) This device must accept any interference received, including cause undesired operation.

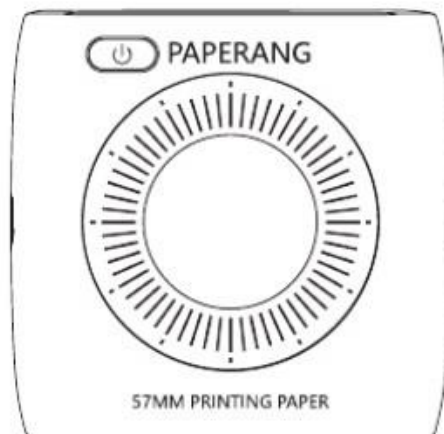
All copyright reserved ©Xiamen Paperang Technology Co., Ltd., All rights reserved.

©2016 Xiamen Paperang Technology Co., Ltd All right reserved.

HLF16011297E



HD 300dpi



Quick start guide

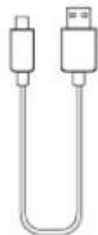
Packing list



PAPERANG P2

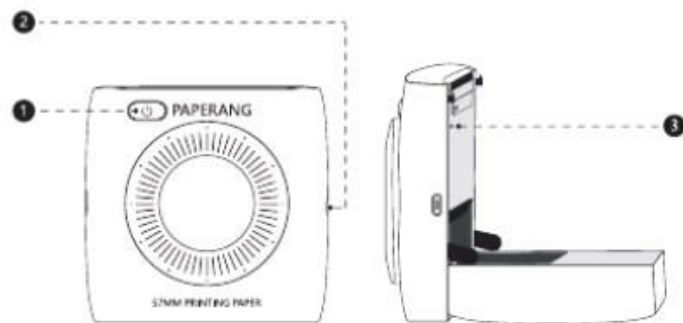


Ordinary thermal paper



Data cable

Product introduction



- ① Power key
- ② MicroUSB interface
- ③ RESET key

Users' Guide



Status of power key

Long press three seconds to switch ON / OFF

- Normally on: standby mode/charge completed
- Slow flashing: Charging
- Quick flashing: Insufficient consumables, equipment cover not tight, lack of electricity, print head overheated



Charging status

Use for the first time after purchase

- We suggest using it after fully charged
- Mobile adapter can be used or connected to the computer for charging



USB data cable

Mobile charging cable can also be used besides the special charging line of the Paperang

- Special charging line of the Paperang is recommended for charging
- About 90 minutes are needed when using 5V \pm 1A for charging



Buying office of the Paperoll

Can be purchased at the official website or at the online mall

- Official website (www.paperang.com)

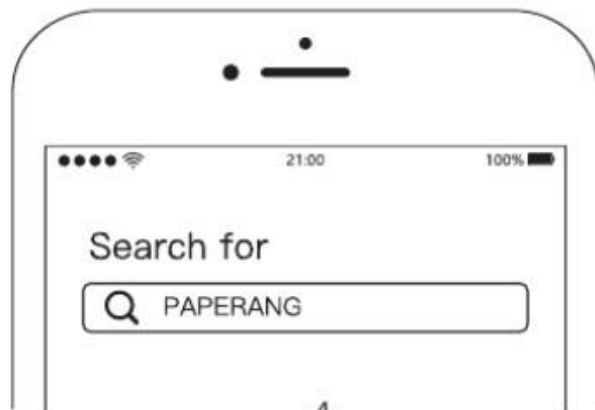
Download APP



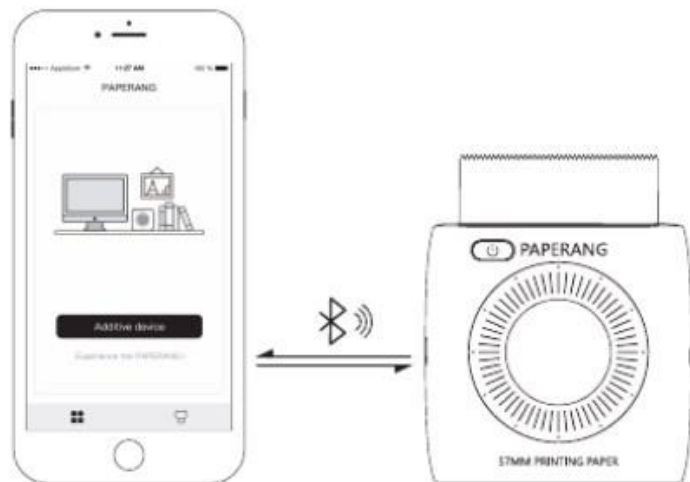
Download on the
App Store



GET IT ON
Google Play



Add Paperang



Register and login to the APP, click the additive device and connect the device by searching for bluetooth or link the device by scanning the code

APP setting



Double click the power key
Print QR code

- After the power key is double clicked, the Paperang shall print the corresponding QR code
- Scan the QR code to connect the Paperang by means of the scanning function in the APP additive device



Bluetooth 4.0
Bluetooth matching

- After the first connection is successful, the Paperang shall be automatically linked the next time you start the application
- The connection status can be disconnected by double clicking the power key when the Paperang is under connection



Set the consumables of the Paperang
Specifications of consumables

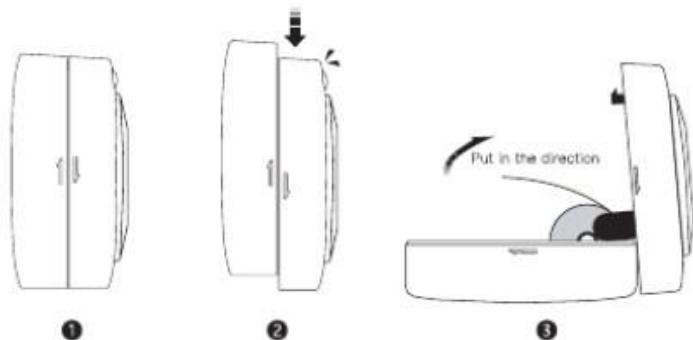
- Select the consumables you are using at the APP consumables selection page
- Different consumables correspond to different models. For consumable models, please check outer package of the Paperoll



Simple operation
APP setting

- The matching information, residual electricity, serial number and firmware version can be confirmed in the device management

Replacement of consumables



- Place the Paperang as shown in figure 1 and pay attention to see the indication of the arrow on the fuselage
- Please push downward to open the upper machine cover by referring to figure 2
- When the consumables are replaced, please refer to the direction as shown in figure 3 and put the consumables in
- Please close the upper cover with the lower cover after the consumables are confirmed to be correctly placed and push the upper cover upward to restore the original state

△ When the consumables are replaced after printing, please never touch the printing head so as to prevent scald by overheating

Official consumables types

Plain paper	Containing no bisphenol A with image retention up to one year
Three proofing paper	Water, oil and PVC – proof, not contain bisphenol A with image retention up to ten years
Adhesive glue for paper with bottom	Containing no bisphenol A, with sticky glue, with no fixed size, can freely set the printing length
Convenient sticker	Containing no bisphenol A, with back glue, can be pasted and taken off at any time
Continuous label paper	Containing no bisphenol A, with sticky glue, with fixed size, can be used for a variety of convenient label mark
Adhesive glue for paper without bottom	Containing no bisphenol A, with sticky glue, with no fixed size, can freely set the printing length
※ The Paperoll is the special paper for the Paperang ※ The three guarantees policy can not be enjoyed if the Paperang failure is produced because the Paperoll is not used	

Safety and Precautions



The batteries are overheated

Battery management and points of attention

- We suggest to unplug the charging line when the charging is completed
- In order to avoid the fire disaster, please never charge at places of high temperature (near the sweat chamber, bonfire for instance)



Points of attention for chargers

Management of printing head and points of attention

- The printing head is probably to be damaged because of improper charging method
- We suggest never to use the meow machine at high humid or dusty zones



Burning danger

The printing head is overheated

- After printing, please never touch the printing head so as to prevent scald by overheating



Charging port damaged

Points of attention during charging process

- Please lightly insert or unplug the charging line so as to prevent the charging port from damaging because of too much force

• NOTE:

This equipment has been tested and found to comply with the limits for a Class B digital device, pursuant to part 15 of the FCC Rules.

These limits are designed to provide reasonable protection against harmful interference in a residential installation.

This equipment generates, uses and can radiate radio frequency energy and, if not installed and used in accordance with the instructions, may cause harmful interference to radio communications. However, there is no guarantee that interference will not occur in a particular installation. If this equipment does cause harmful interference to radio or television reception, which can be determined by turning the equipment off and on, the user is encouraged to try to correct the interference by one or more of the following measures:

- Reorient or relocate the receiving antenna.
- Increase the separation between the equipment and receiver.
- Connect the equipment into an outlet on a circuit different from that to which the receiver is connected.
- Consult the dealer or an experienced radio/ TV technician for help.

Warning: Changes or modifications to this unit not expressly approved by the part responsible for compliance could void the user's authority to operate the equipment.