

# H.265 Megapixel Door Wifi IP Camera NVR System Quick User Guide

**Notice:** Dear, all customer, because CD disk is easy damaged by rude transport and Most of the Customer's Computer Without CD-ROM disk drive, it is hard to copy the files from the CD Disk! In addition, the CD Disk Polluting the environment after used! So we upload all the files of CD Disk in the site!

CD Disk Download Files in amazon drive link is below:

<https://www.amazon.co.uk/clouddrive/share/5eMwYKIURu074AOPHEWzQVUOuJytZPxXFnp1MnCaABw>

Take wireless IP camera for example.

## IP camera application diagram



## IP camera connectors

### 2.1 Power input

Connection with power adapter: DC 12V.

### 2.2 RJ45 LAN port

It is 10/100M adaptive RJ45 network cable interface, which could be connected to all network devices, such as switch routers, etc.

No lights: Power indicator; Normal: Insert the power supply only the indicator lights no lights, after you connect the camera; RJ45 Port With Network Cable

It Show Green: Network Signal; Normal: blinking

## IP address search and modify

IP address search tool is in the 2019-11-12 SQ Series IPC Software & Instruction zip files of "DeviceManager".

Factory default settings of the IP camera:

IP address: 192.168.1.XX

Subnet Mask: 255.255.255.0

Gateway: 192.168.1.1

DNS1: 192.168.1.1

Username: admin Password: no password

If default IP address of camera is not in the same Network segment in one LAN as the computer, then you should modify IP address of the camera.

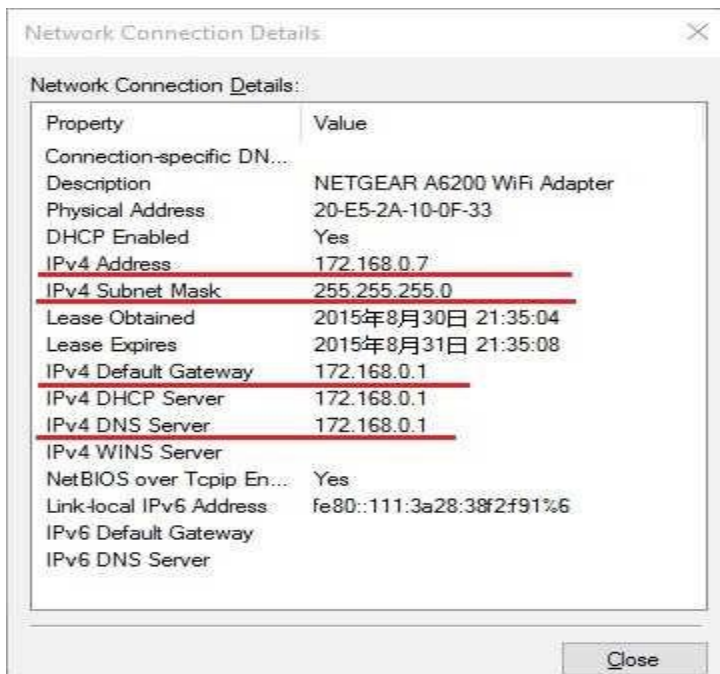
**NOTE:** The camera's DNS1 must be the same as the router; otherwise cell phone to watch will break.

Step1: Click "IP Search" to search the IP address of camera.

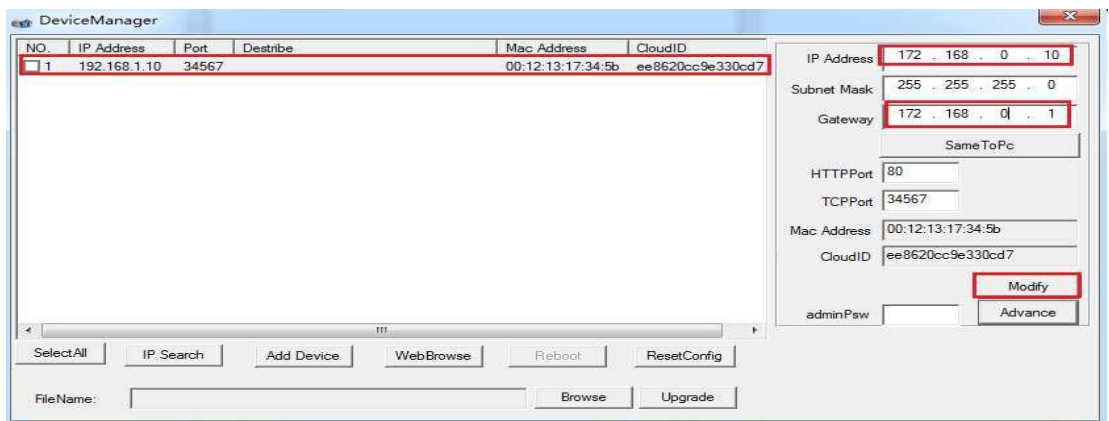


Step2: Modify IP address (make sure the IP camera and the computer in the same Network segment in one LAN)

Step2.1: Confirm the computer network segment.

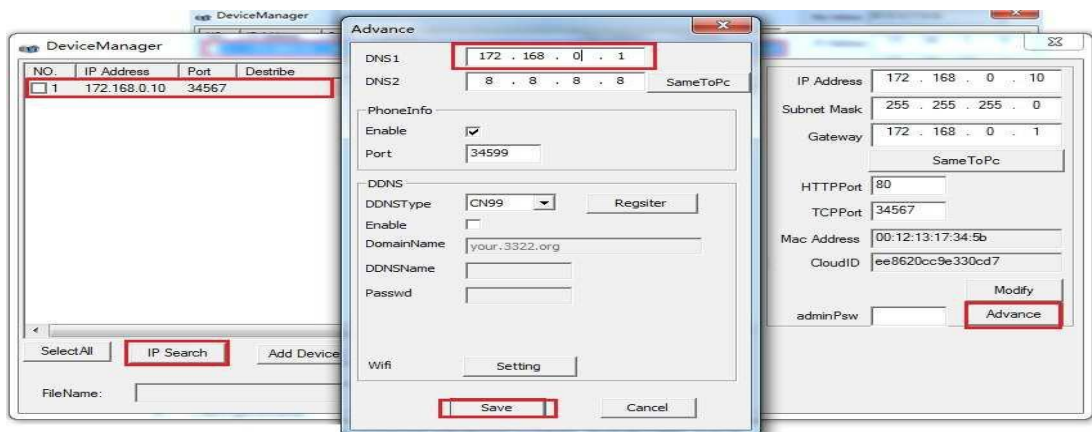


Step2.2: Select one IP camera and modify IP address, click "Modify".



Step2.3: again click "IP Search", select IP camera address with revised moment ago. Click

“Advance” to modify “DNS1”



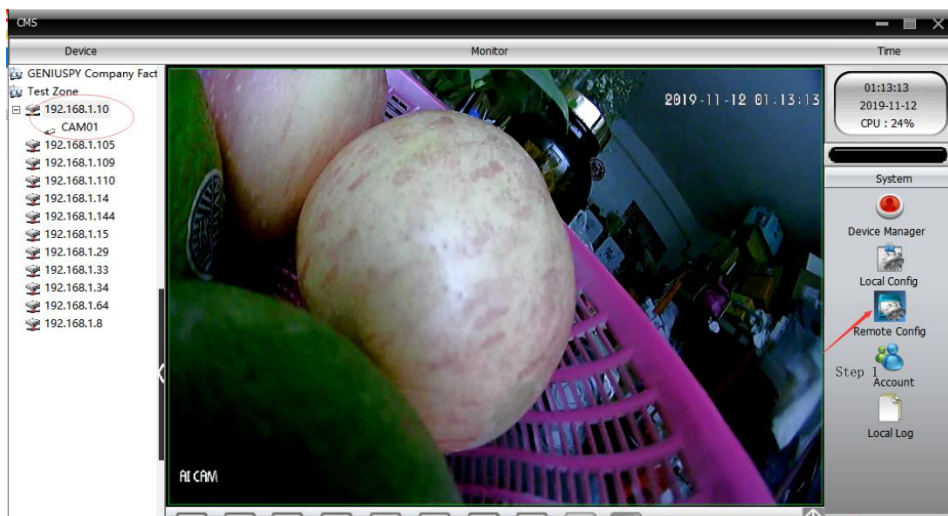
#### 4 Wireless setting

Wireless settings only support the camera which has wireless function.  
“CMS” select IP address, click “Remote config”, click “camera ‘s device config” → setting → system → Netservices → Wifi → Search → choose wifi ssid name → input correct password → Save → then you can unplug the lan cable → the camera will be work under wifi wireless

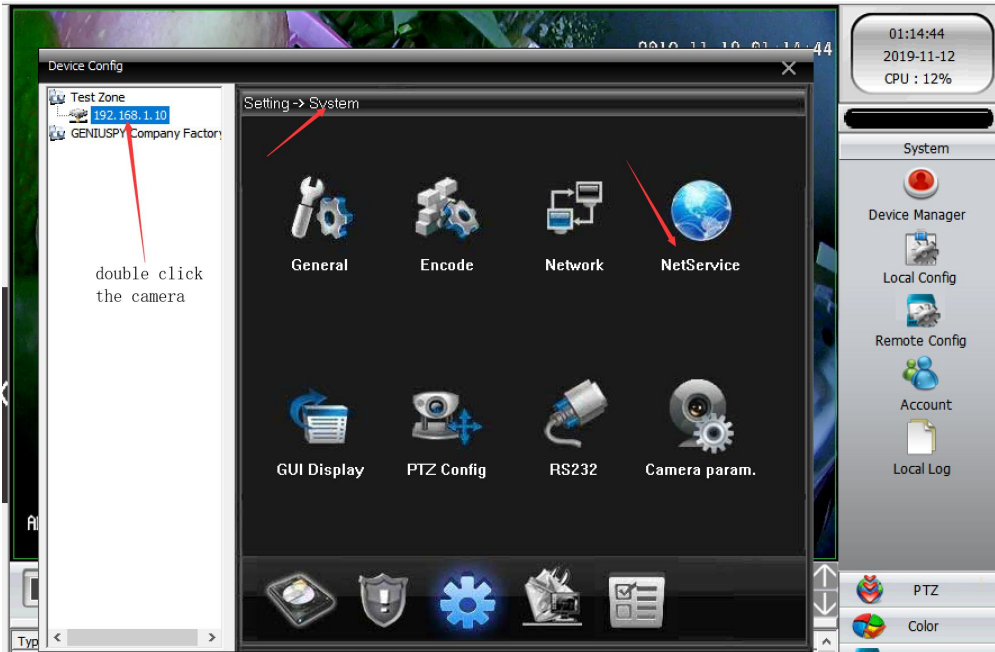
**NOTE: If click” Search” is pop up error, please research.**

Wireless setting also can be set in IE browser.

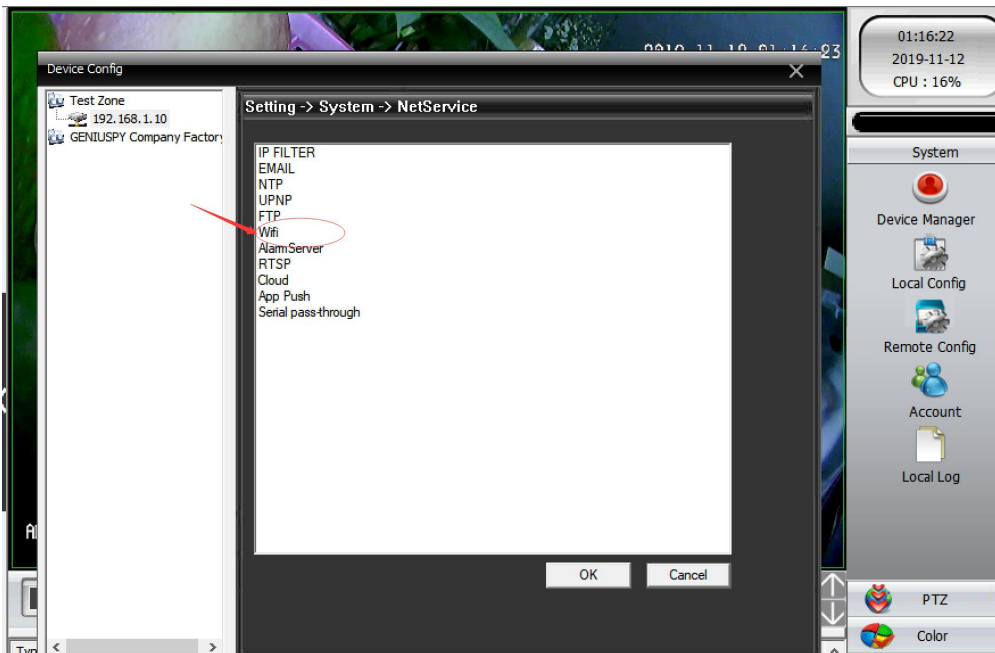
#### Step 1



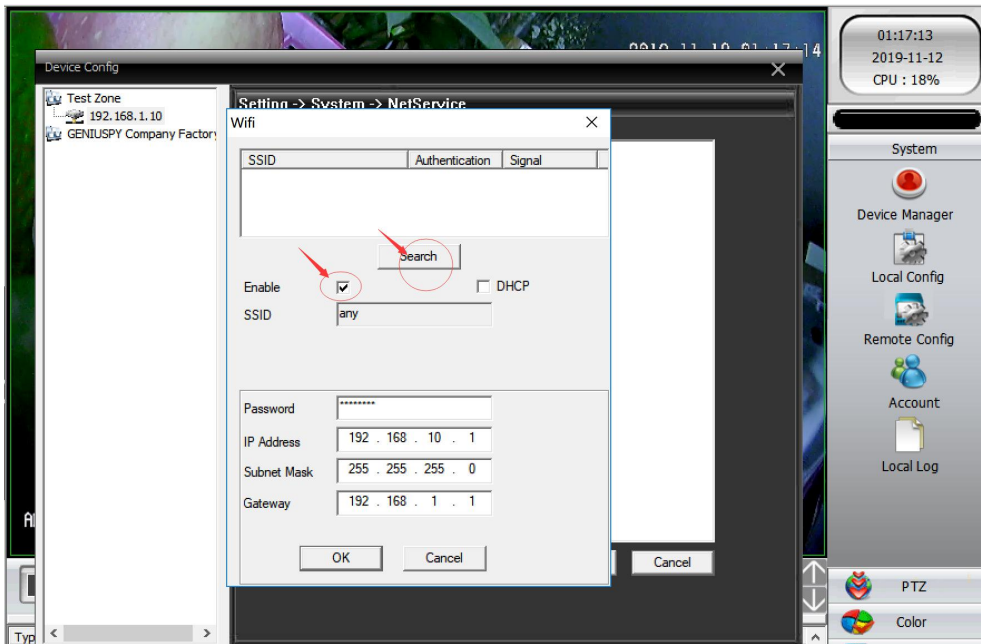
#### Step 2



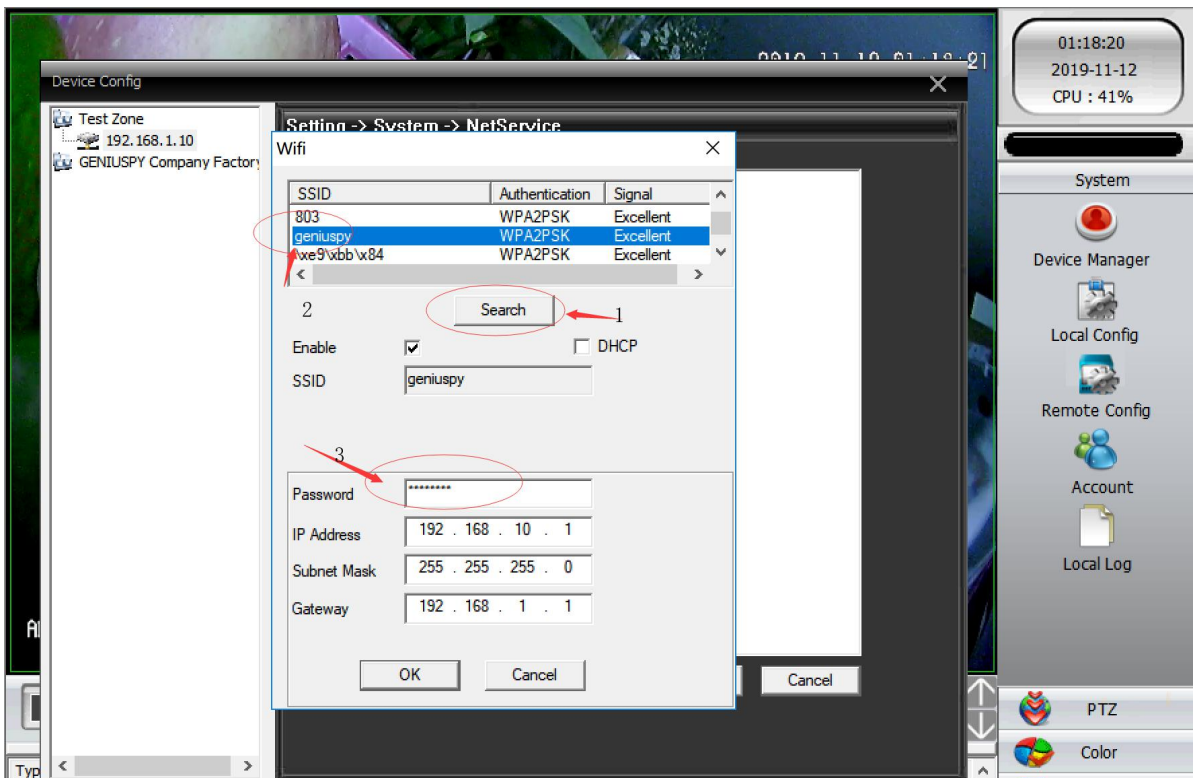
### Step 3



### Step 4



### Step 5

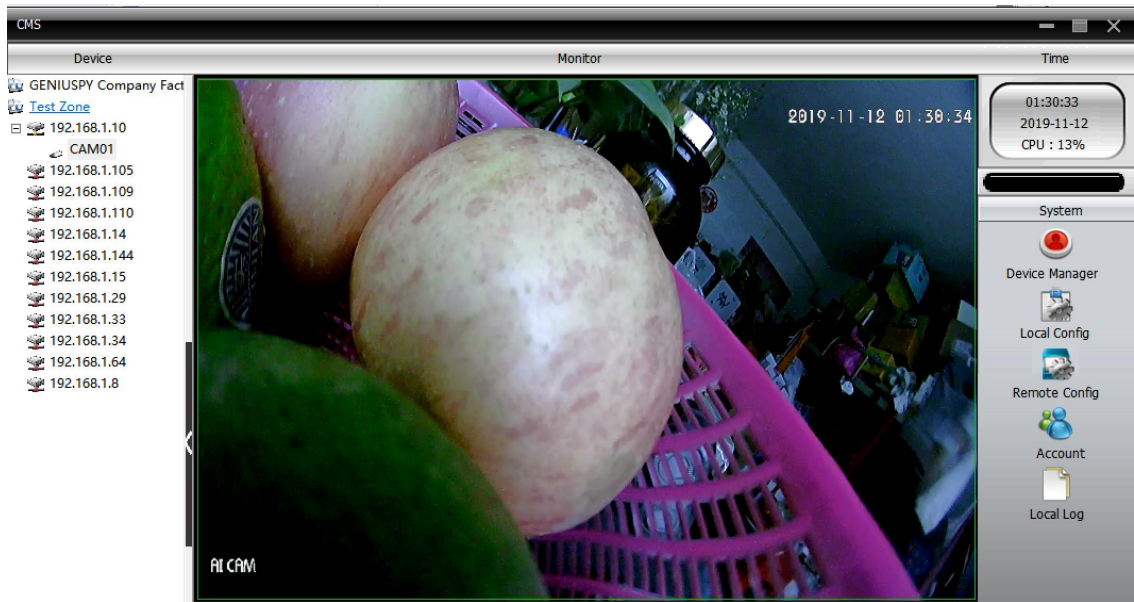


Click ok is done ,and then unplug the lancable ,only make the camera power with DC12V ,it will work by wifi !you can use tools - device manage search and find the camera !

**There also have another wifi connect way for the door wifi camera :this models support wifi hotspot connection ,**

**Regard how to enable the camera 's wifi hotspot**

**Step 1:open the "CMS "software and click add the device ,after you make it work and can see the real time video,**

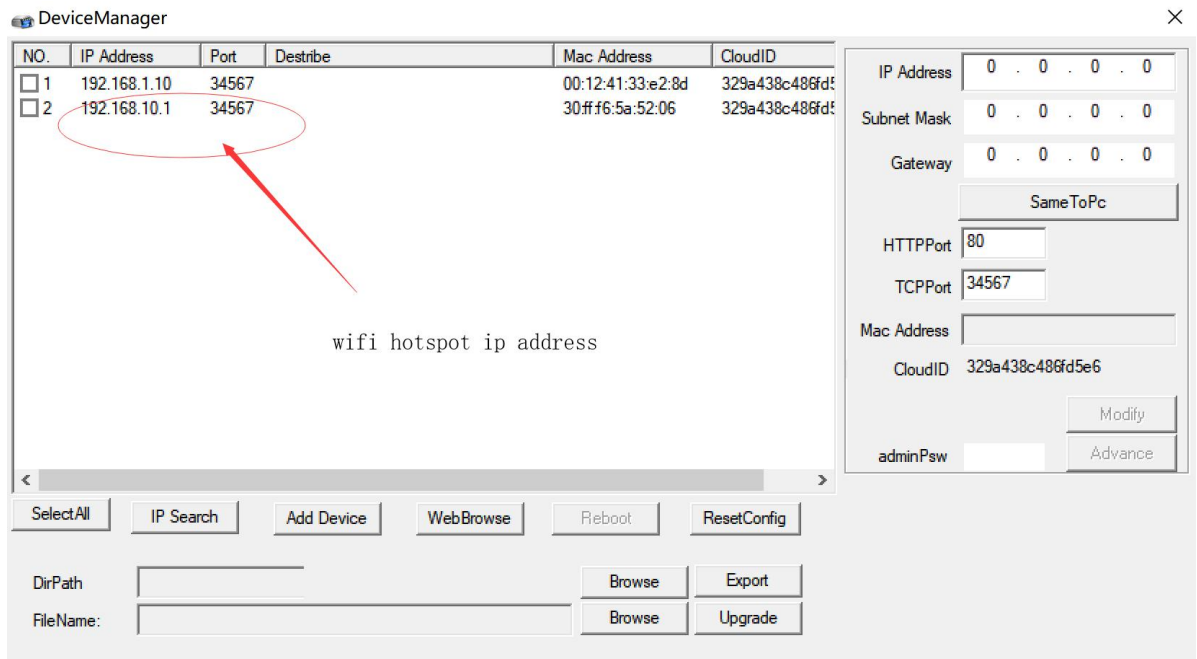


**Step 2,press the camera's cable reset button 3 times with interval time 1seconds ,**



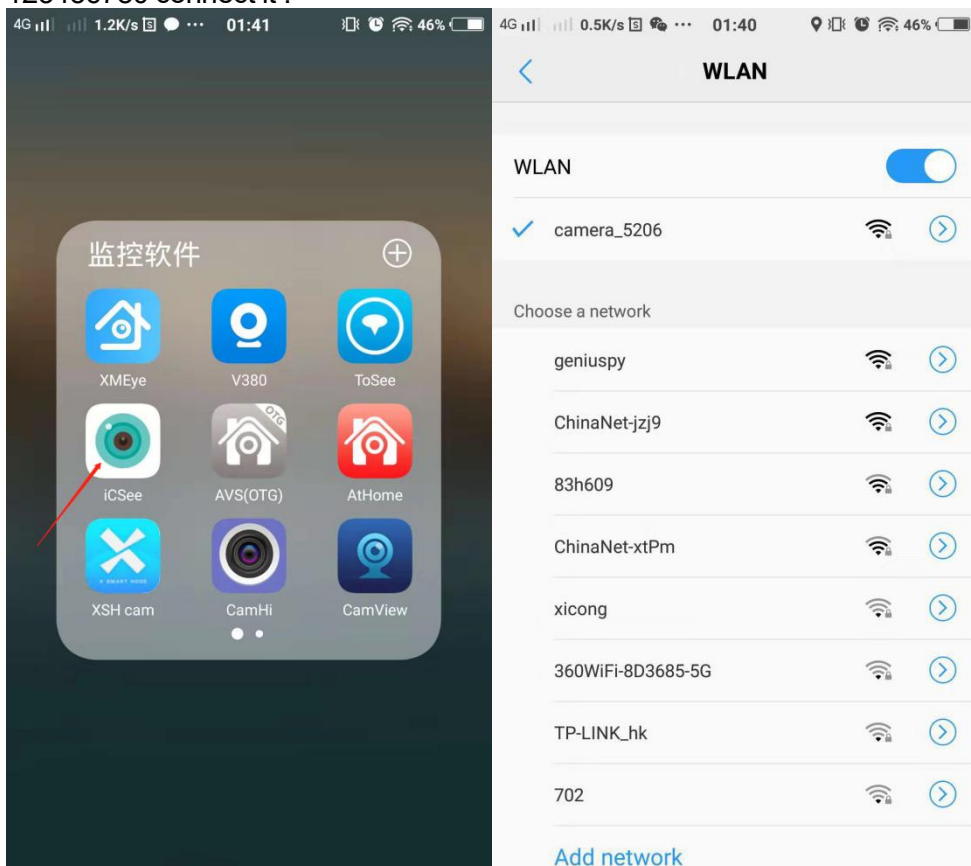
Step 3 ,open the device manage ,search the device ,you will see another device with same uid ,but ip address is 192.168.10.1 , this is the wifi host ip address

**Pictures below:**



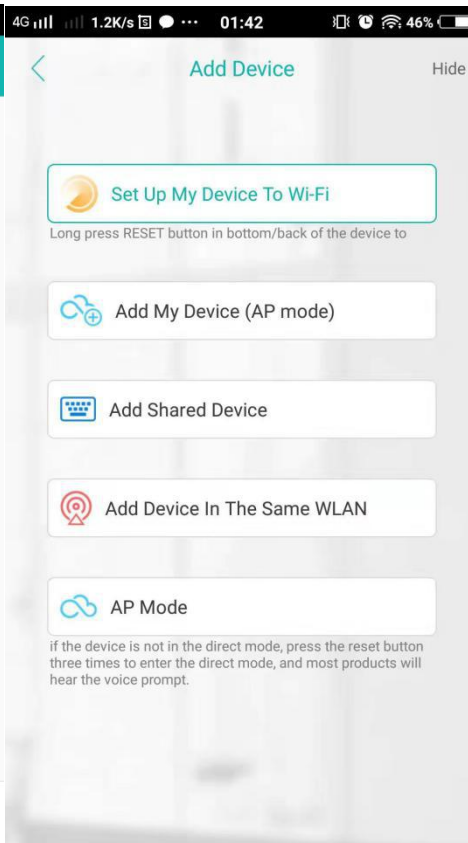
#### Step 4:

Open your phone and already download iCSEE APP ,go to wifi setting ,find an wifi ssid named :camera\_5206 or other numbers, connect with this ssid ,input this wifi ssid password 123456780 connect it !

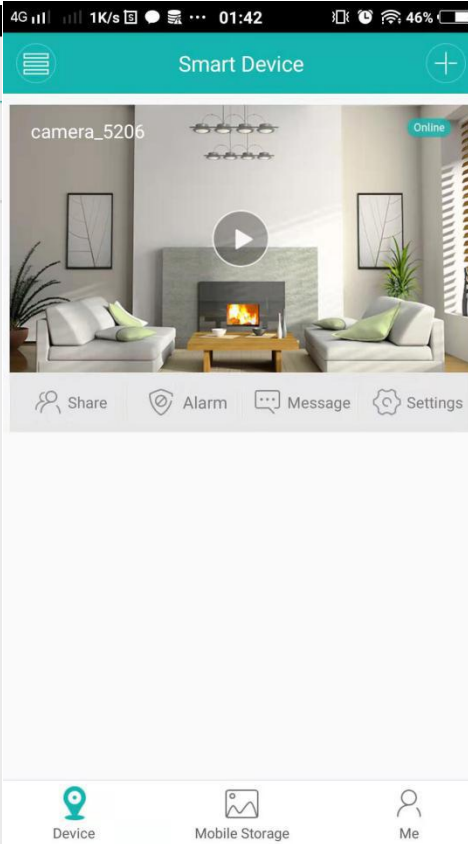


#### Step 5

Open ICSEE app ,add "the device in the same wlan "

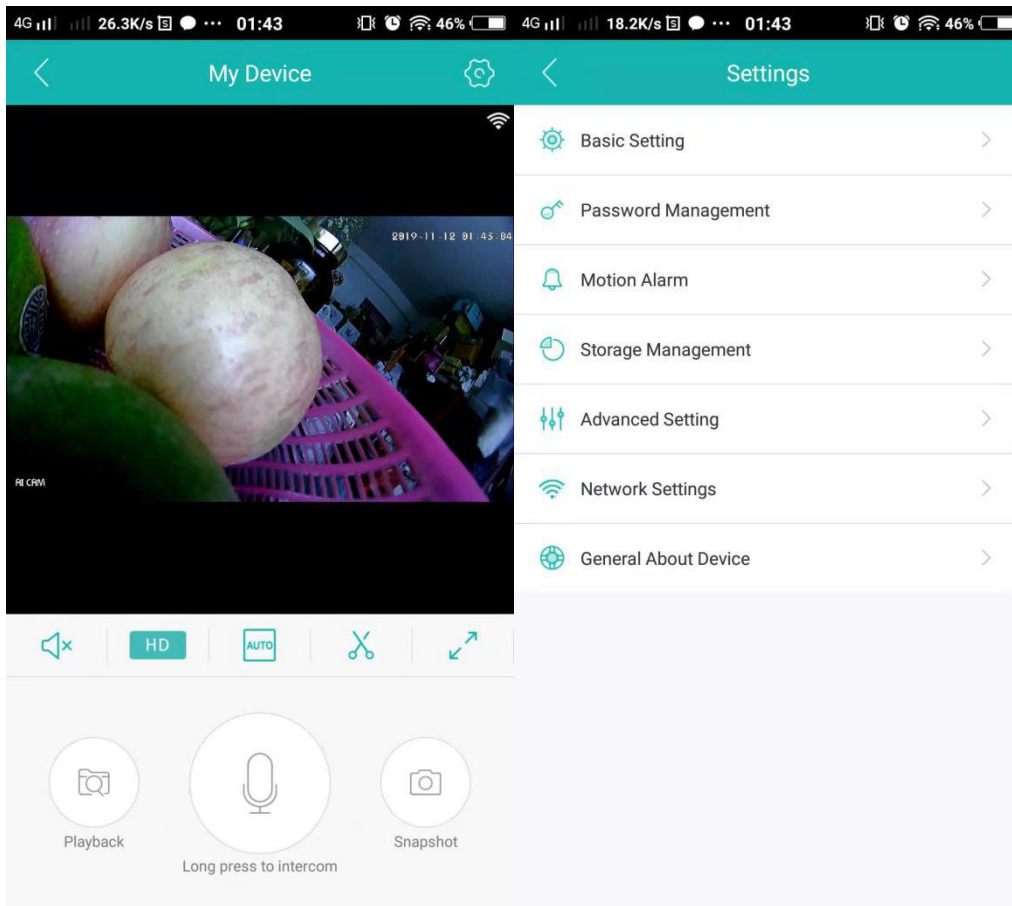


### Step 6: add the device



### Step 7: configure the wifi setting






Step 7: configure the camera to be routing Mode

# Network Settings

Current AP Mode



 AP Mode

 Routing Mode

 any

 ..... 

WIFI list 

ChinaNet-jzj9		
geniuspy		
ChinaNet-xtPm		
TP-808		
xicong		

\* Note: If you can not find a hotspot to connect to your device, refresh the list \*

Save

Then ,the camera will be worked under wireless !

For wifi camera ,we suggest use ICSEE App ,it is good for set up , for normal ip camera without wifi ,you can use xmeye ,or ICSEE depend on you

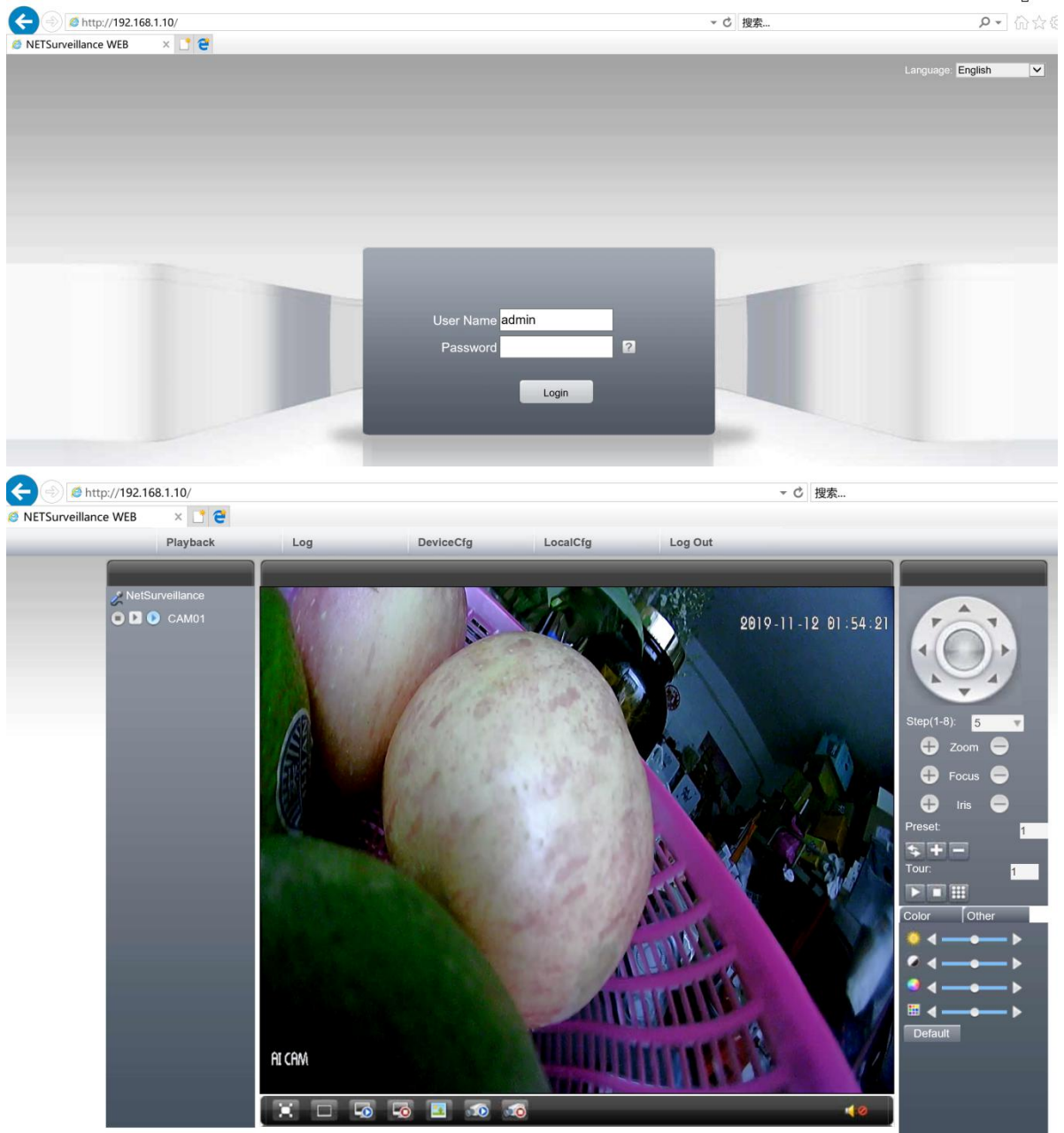
### 5 IE preview

5.1 Input IP address:192.168.1.10(default) User name: admin password: no password

After login, you need install the player (ActiveX controller) to display the camera image

If the IP address of camera has been modified, please input the modified address in your IE browser.

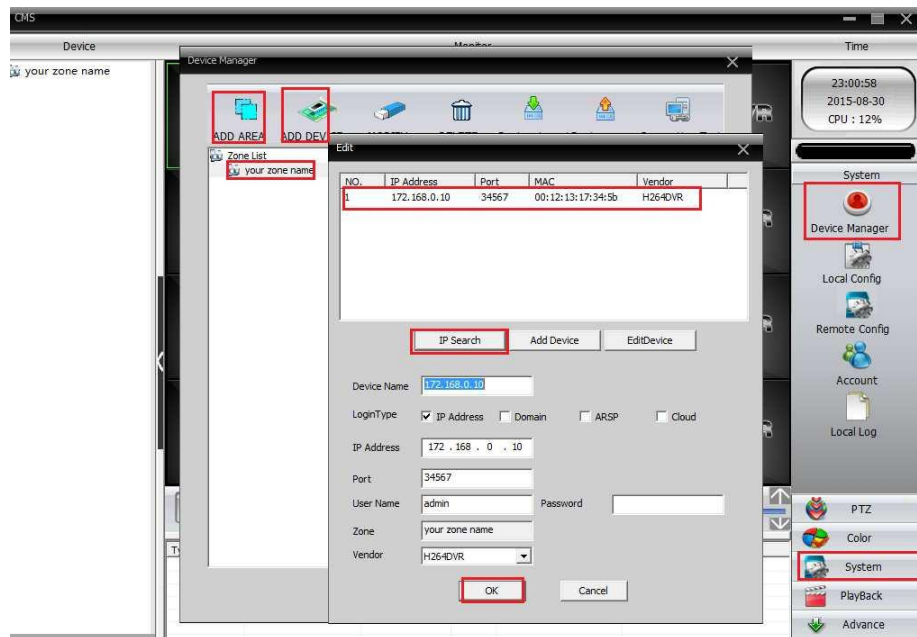
5.2 After login, you will get the below image:



### 6 CMS preview

CMS PC client only support windows system. Install CMS, run it. Default admin: super; password: no password.

Add IP camera: Click "System">" Device Manage">" ADD AREA". Input a zone name and select it, then click " ADD DEVICE".



### How to Enable video Record & TF Card Record Function

The wifi IP Camera some models without sd card slot ,some models are have tf card slot !  
 If have tf card slot ,you need insert the tf card into the camera body !if not have tf card ,you can use NVR record the video !

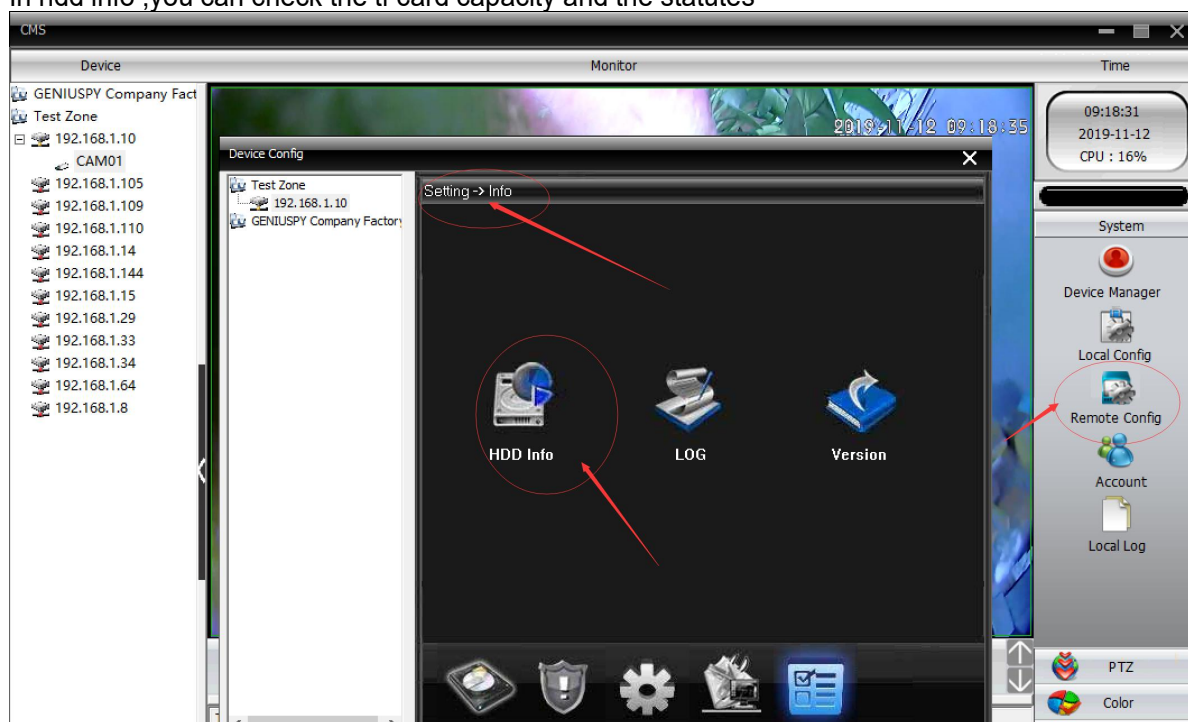
(Remark:For long time recording,we suggest use the Onvif NVR !  
 Camera support Onvif Agreement , it can compatible with different brand Onvif NVR ,such as Hikvision, XM NVR, Dahua Etc)

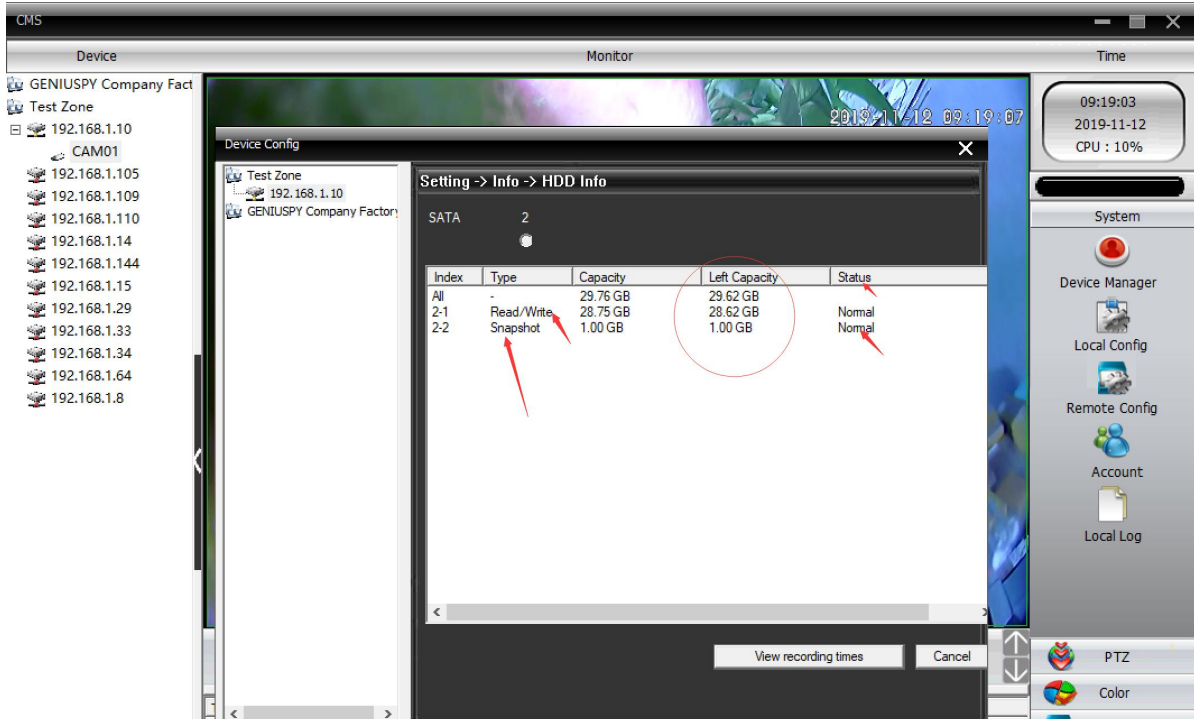
**Take how to enable video record of the tf card wifi ip camera with 32gb tf card for example.**

#### Step 1

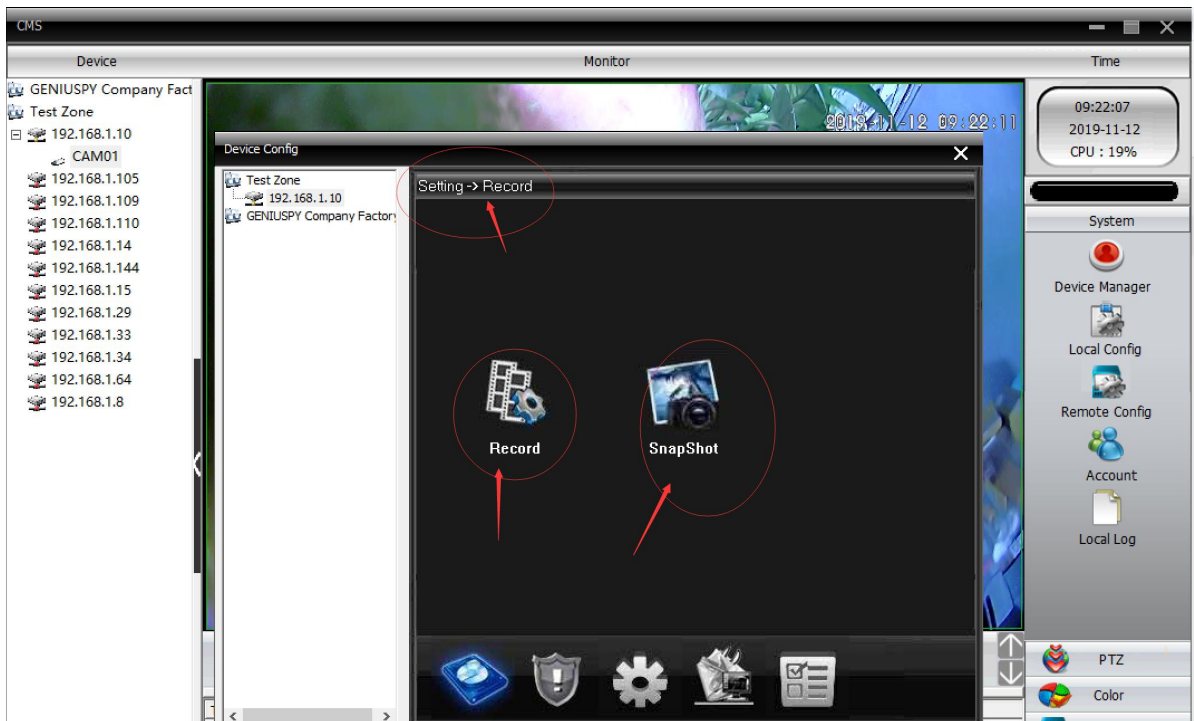
Open CMS” select IP address, click “Remote config”, click “camera ‘s device config ”→setting→info →hdd info

In hdd info ,you can check the tf card capacity and the statudes

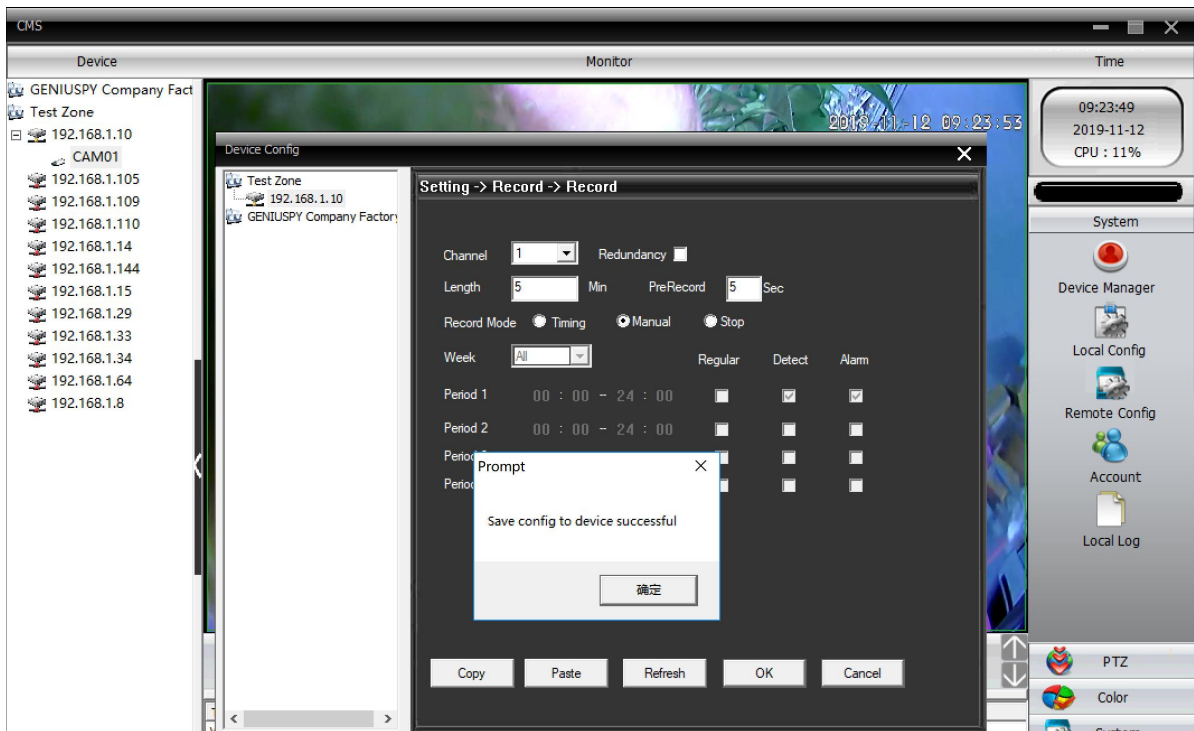
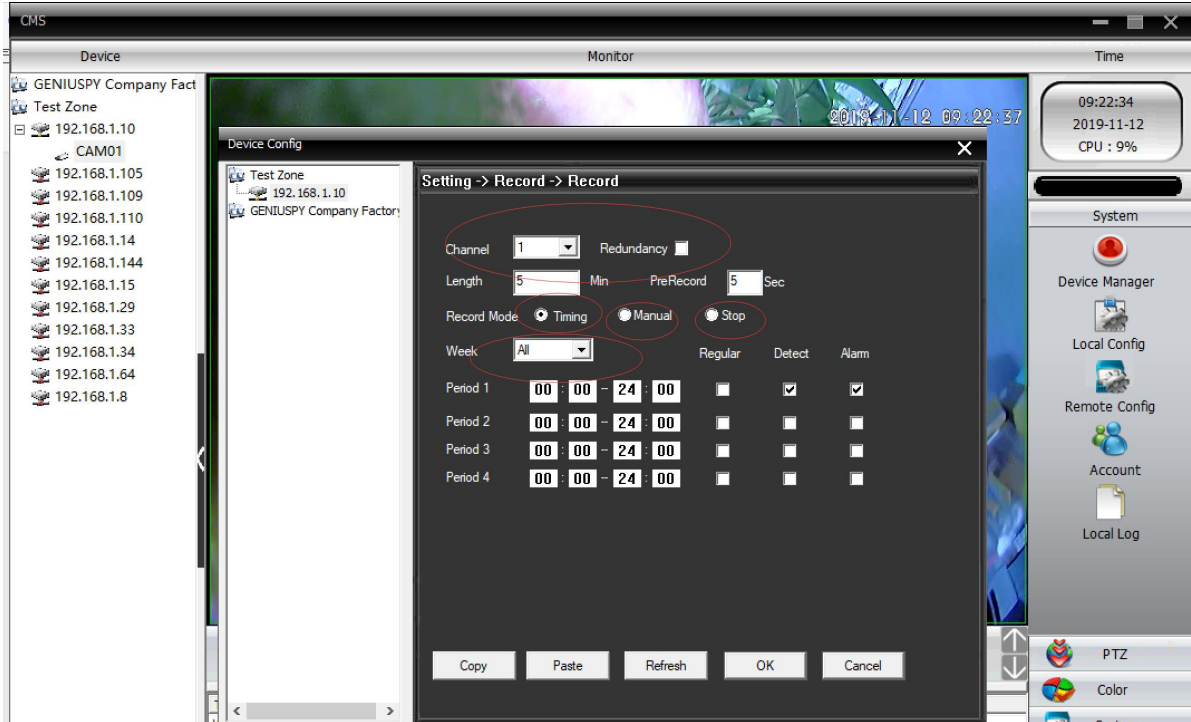




Step 2 set up the camera 's record schedule in the CMS click "camera 's device config " → setting → record or snapshot, set up the record is for the video, Snapshot is for pictures !

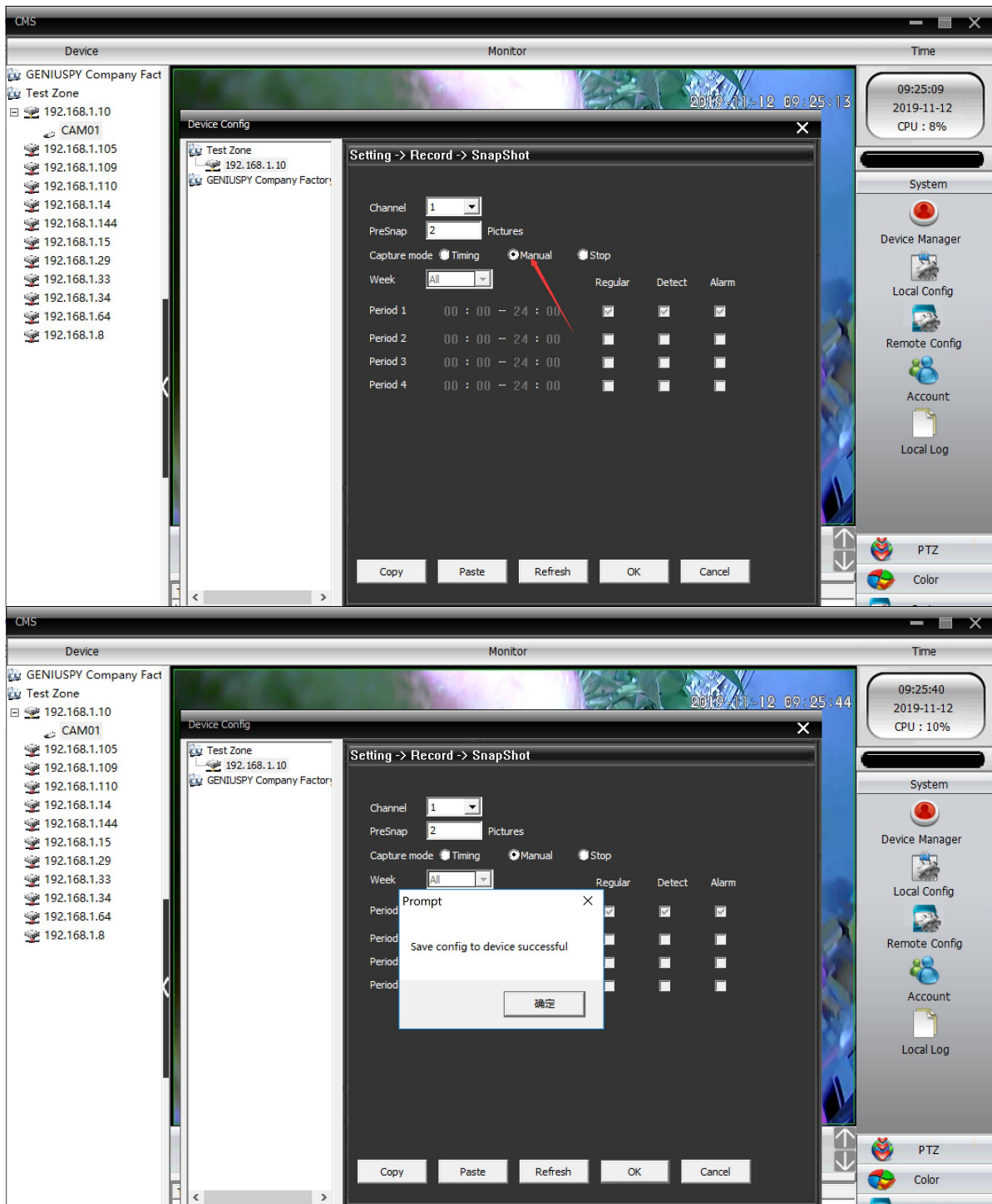


You can set up the record time and schedule as pictures below:



Then ,the camera will save the video in tf card!

Regard the snapshot function ,pls set up the camera as pictures below:

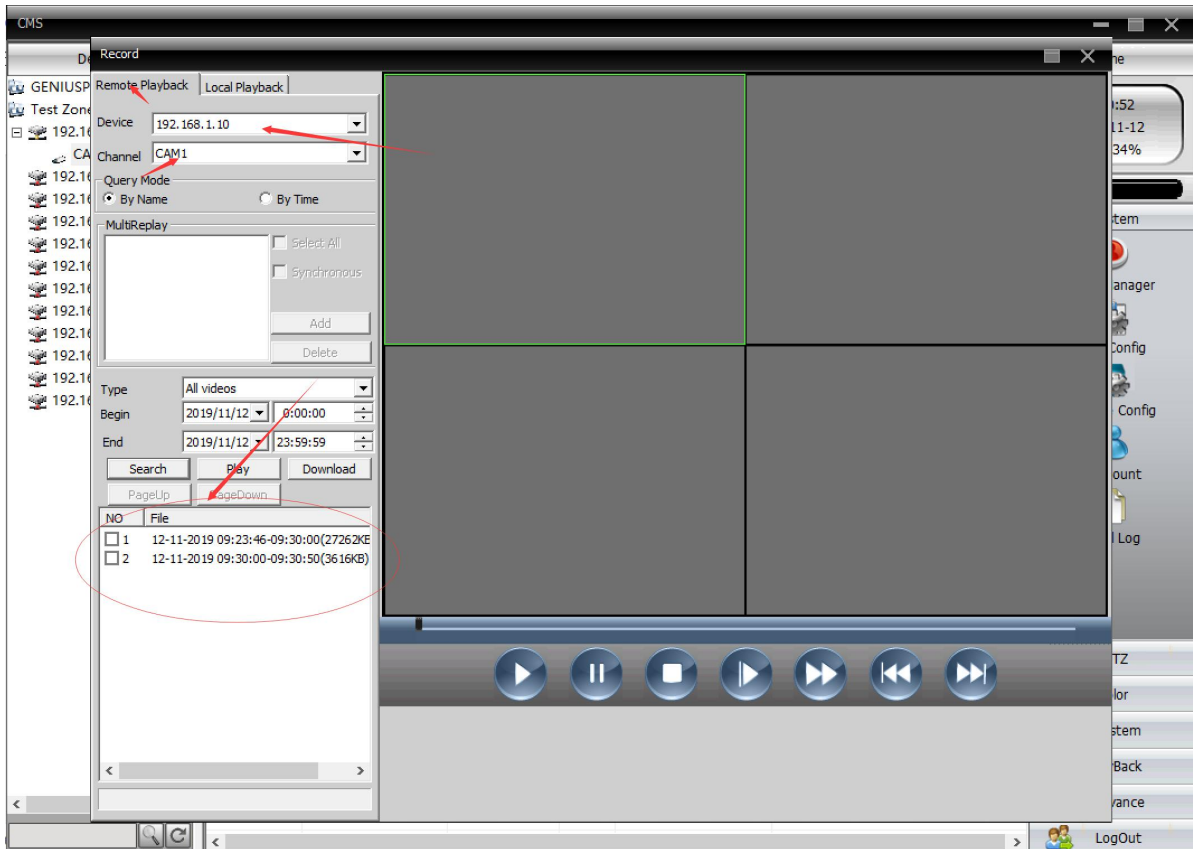
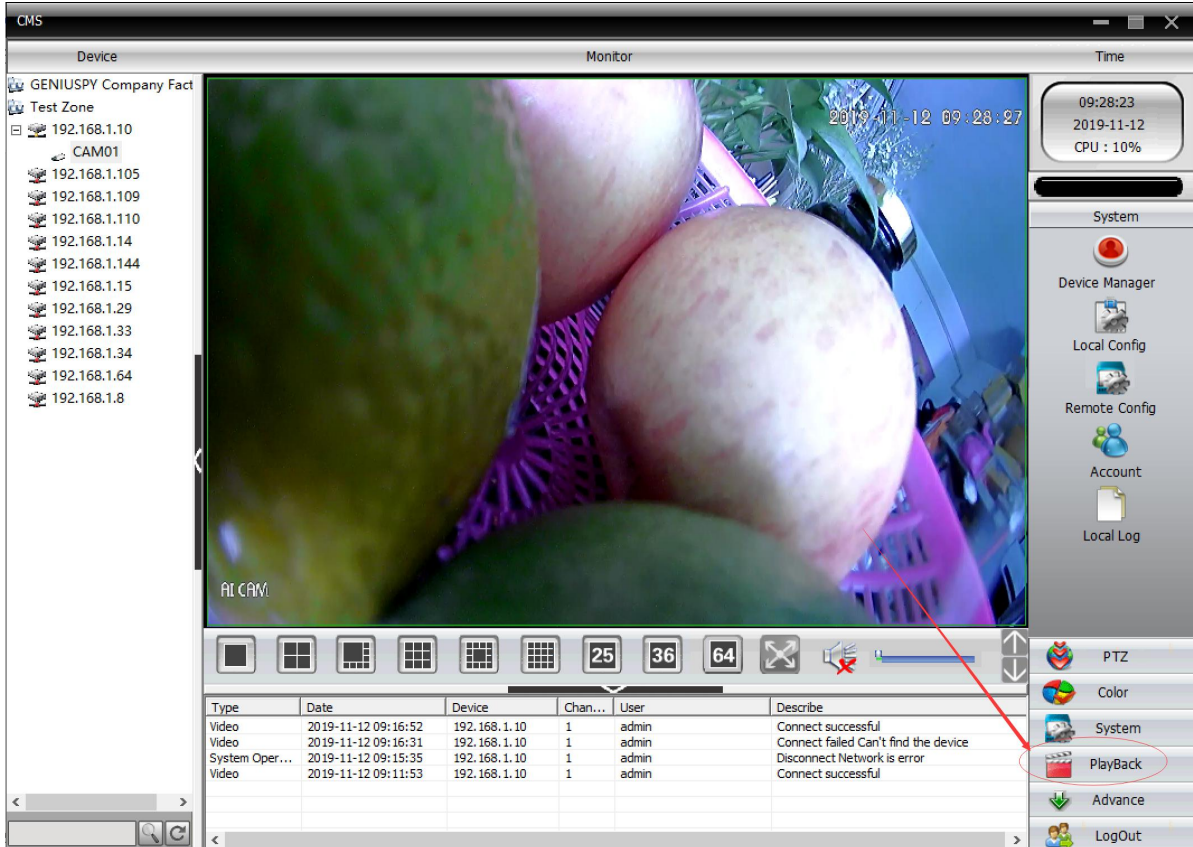


After you make it above above , the camera is recording !

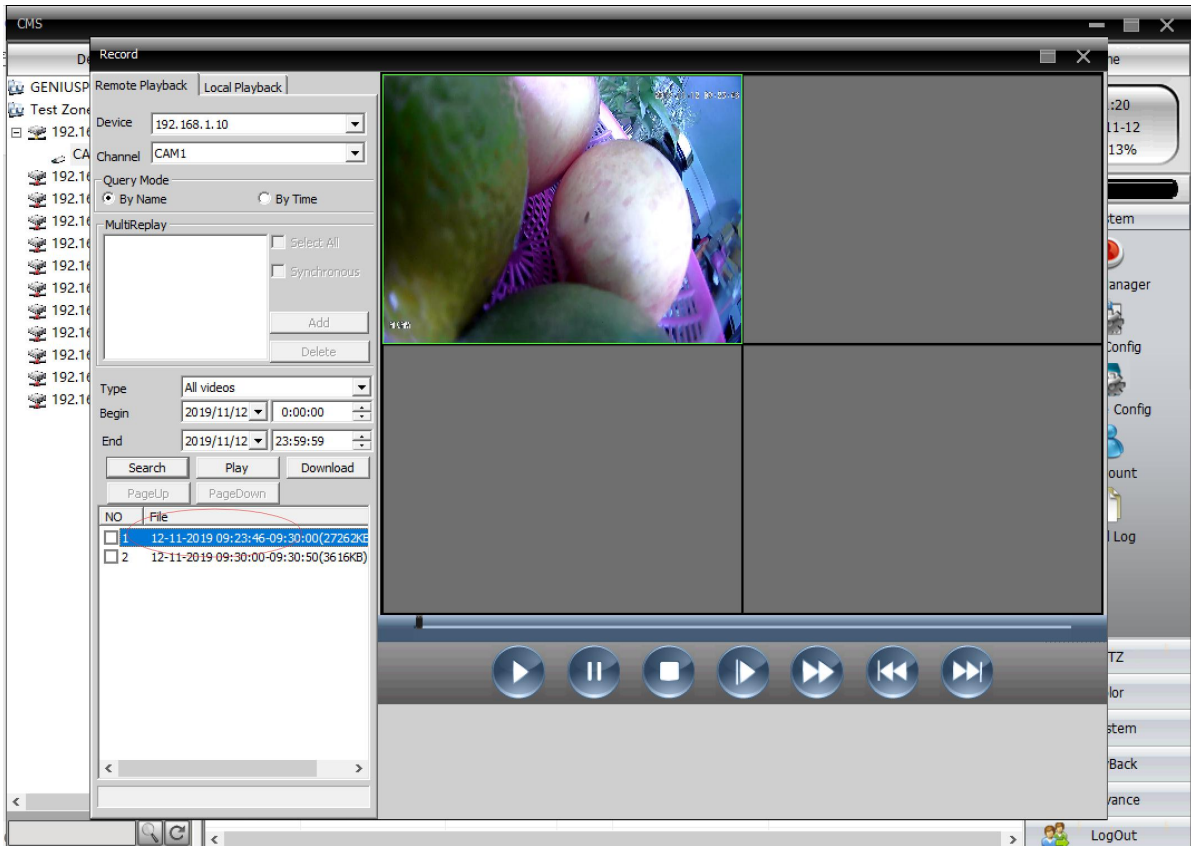
**How to playback the video Record & check the snapshot**

There have 3 ways to playback the video

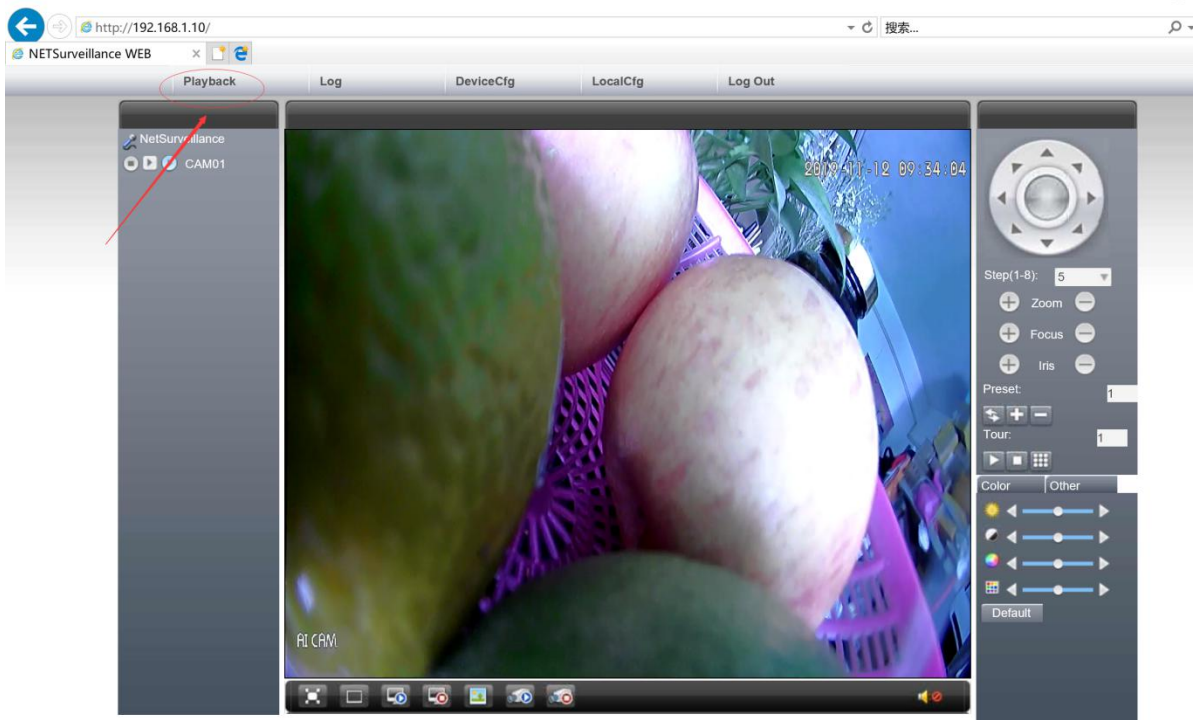
**A: VIA cms Software--playback -remote playback- your camera's ip address- choose the files of record playback**

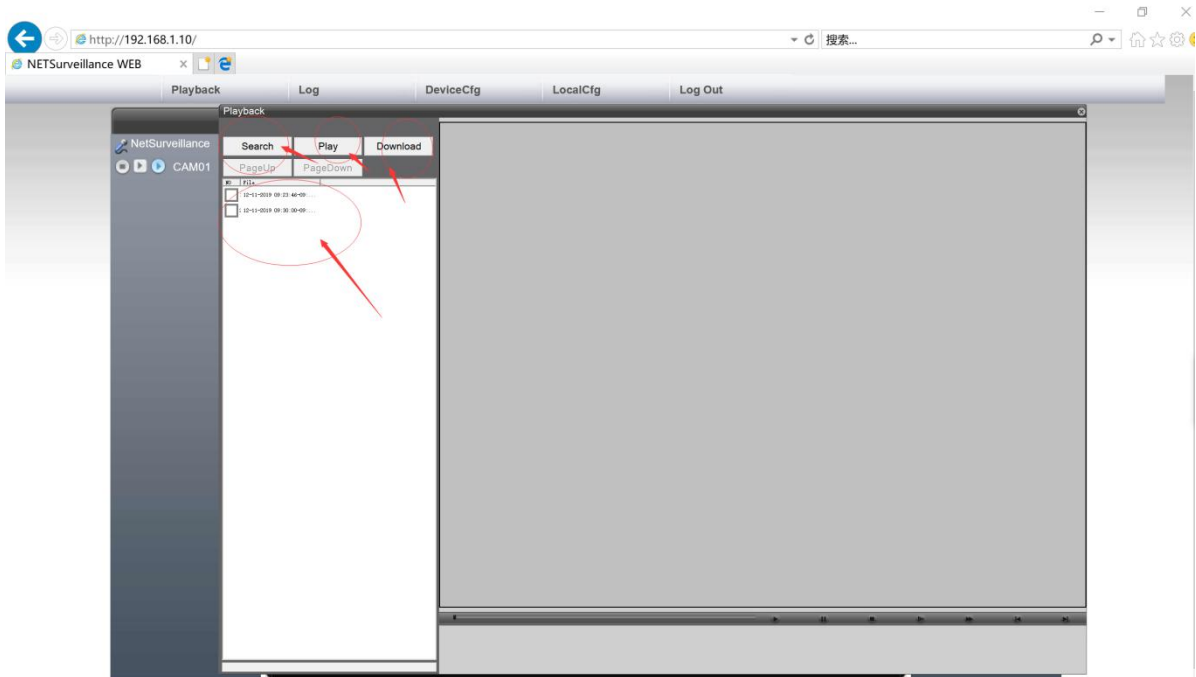
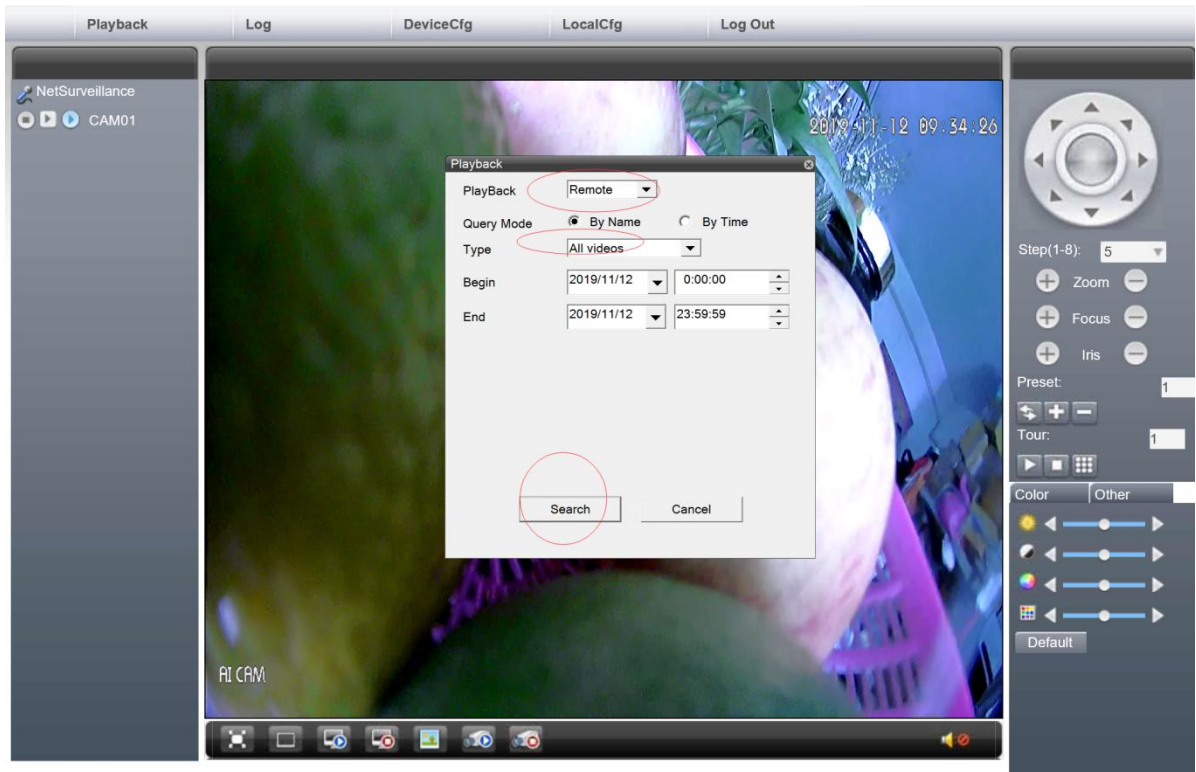


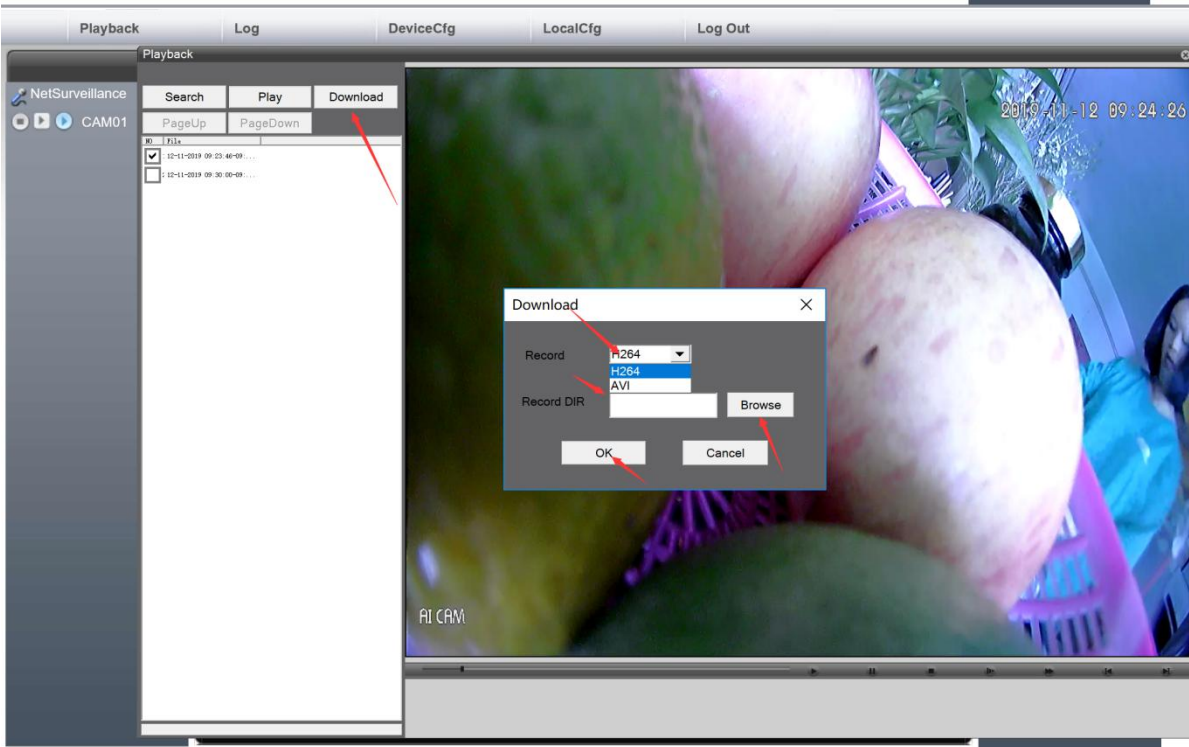




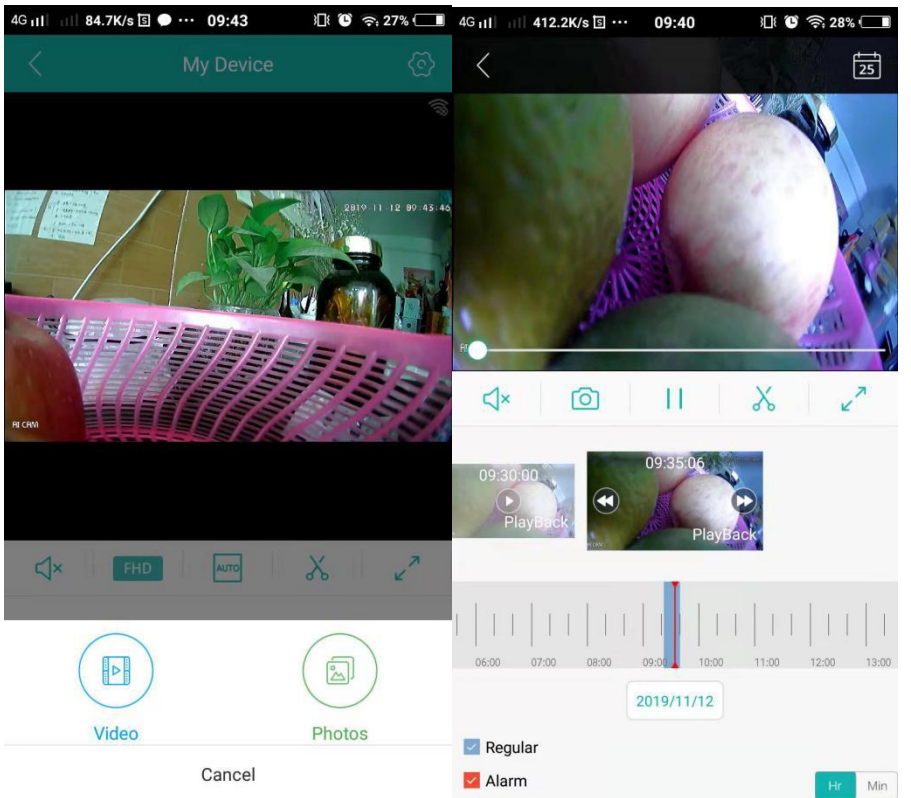
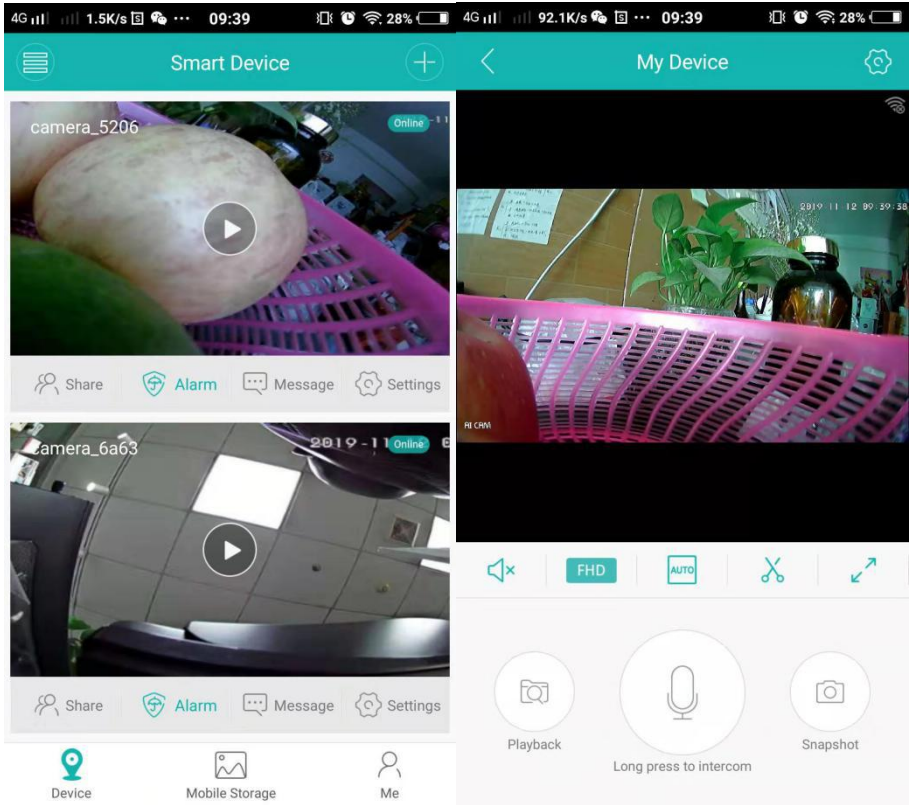
**B: VIA IE explorer webbrowser---playback -remote playback- your camera's ip address- choose the files of record playback**

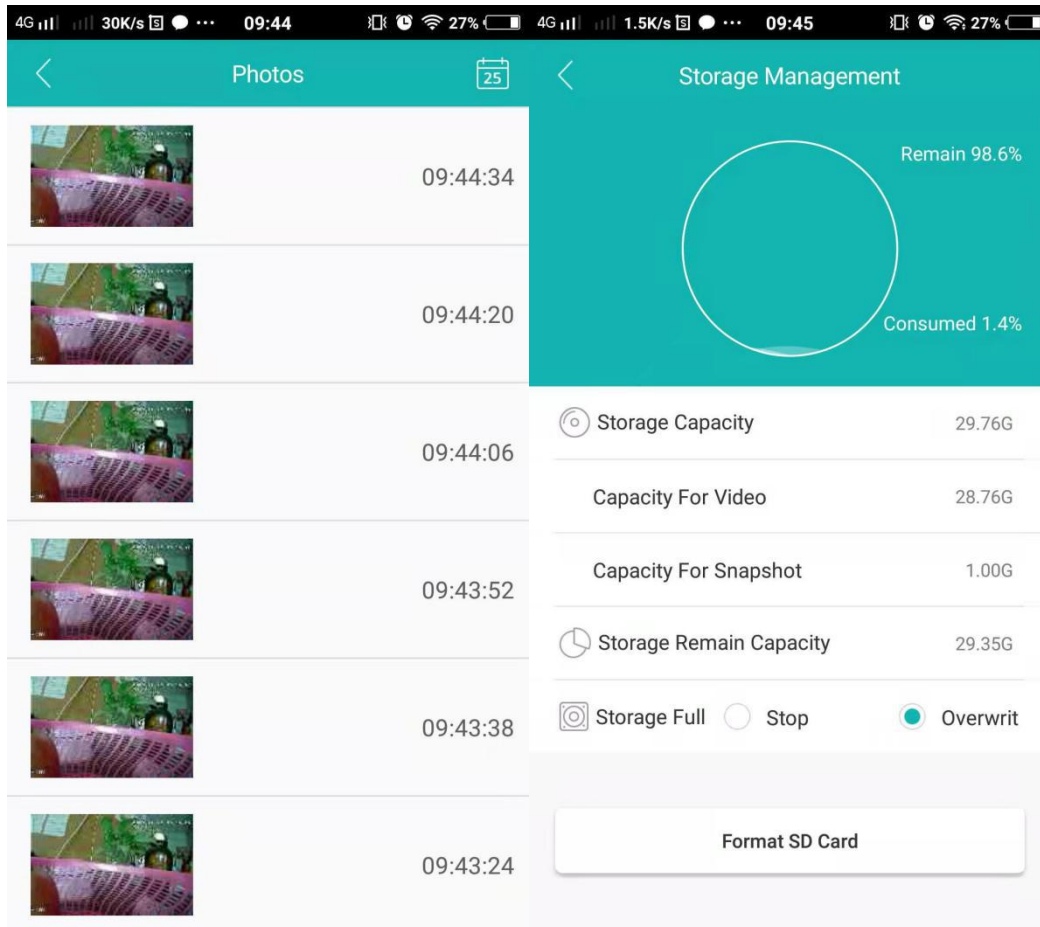




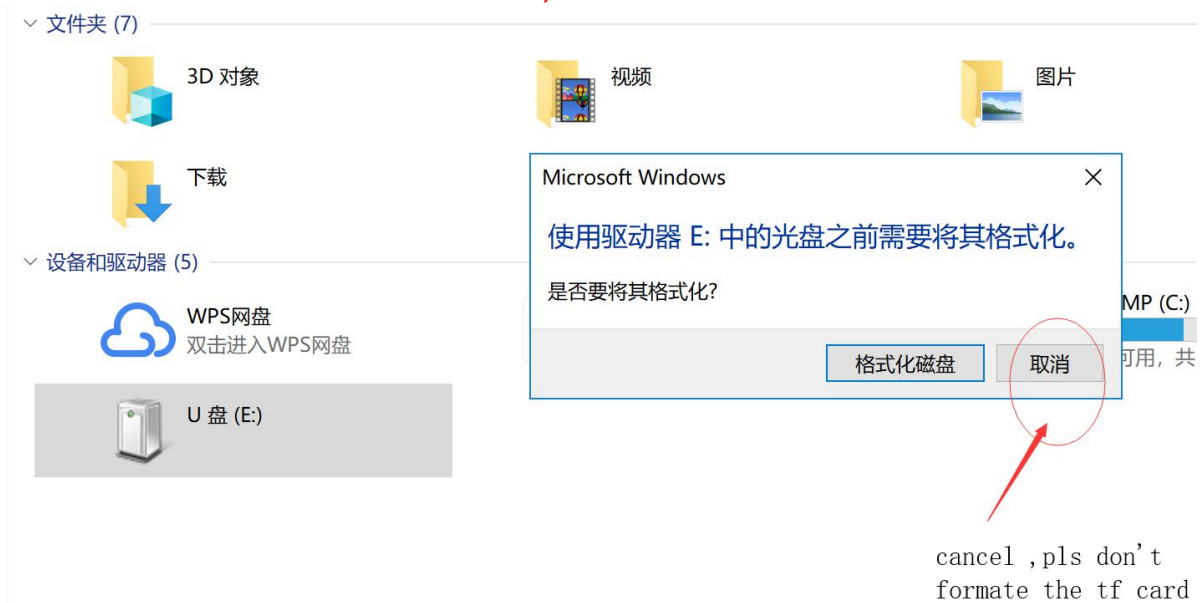


**C: VIA ICSEE APP---playback -pictures button-**





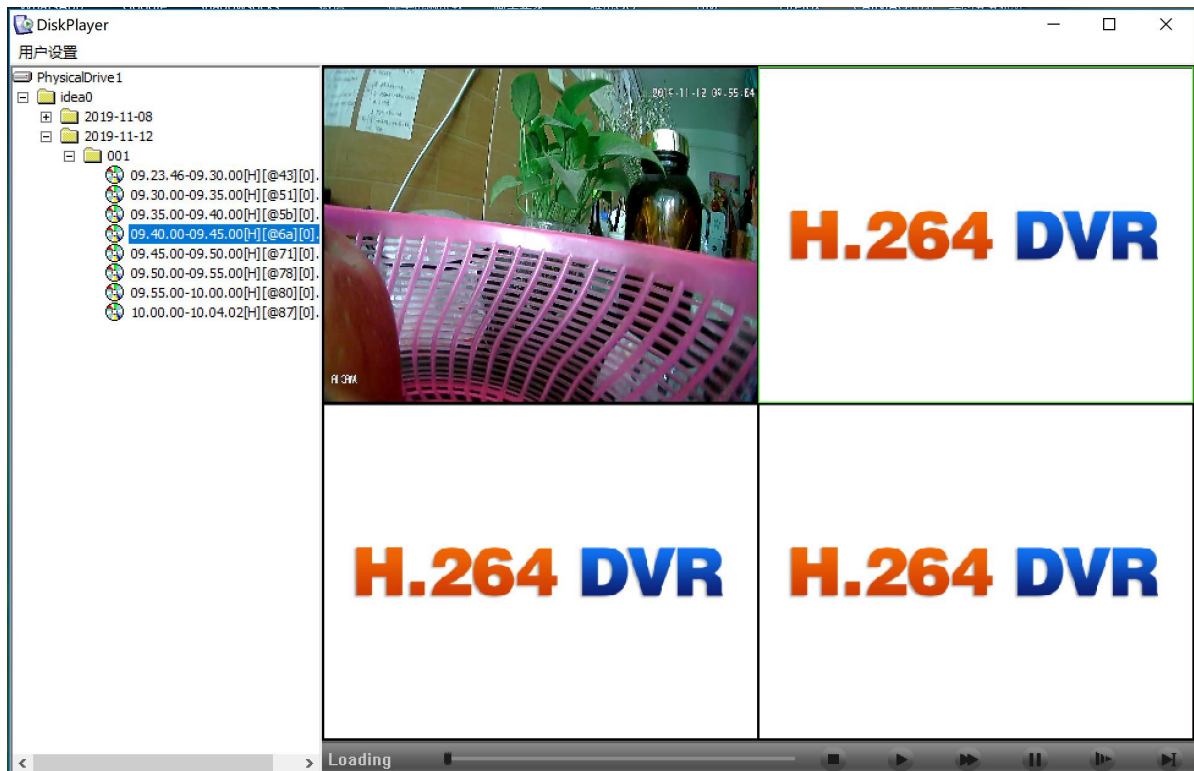
**Attention :If you take out the tf card 32gb with card reader and operate it in PC ,pls don't formate the tf card !!!if formated it ,the all files will be loose !**



Pls install the Diskplayer software in your computer !







**So you can playback the video record in the tf card !**

#### **Mobile preview**

9.1 Mobile app name is "xmeye or ICSEE". Support iPhone/Android smart phone.

9.2 Please search "xmeye or icsee" download mobile app from Google play or app store. Or scan QR code download mobile app.



**Android**



**iOS**



9.3 Open “xmeye” app on your mobile. Click “local login” add Device



☰
Device List
✕

Add Device
WiFi Config

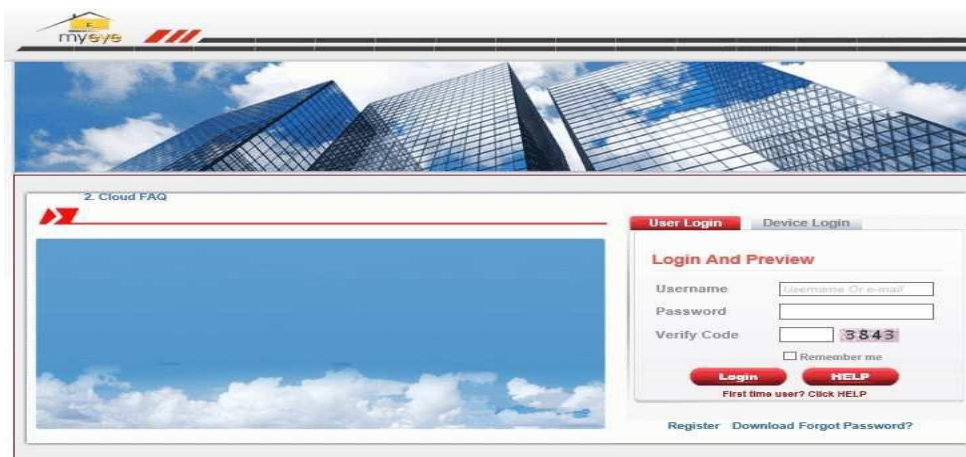
Advanced

OK
Cancel

Search

## 10. Cloud preview

The cloud website is: <http://xmeye.net>, as shown below:



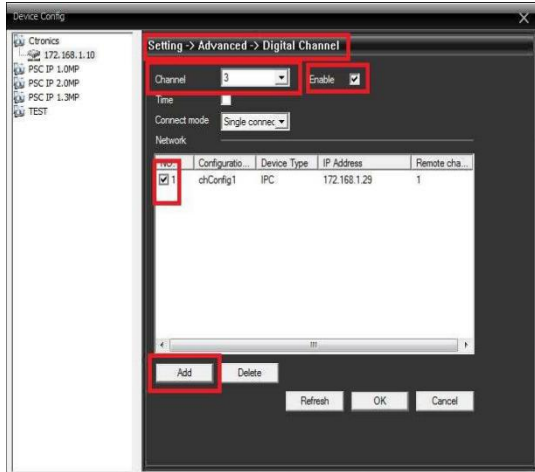
User login: You need to register. Device login: You only need to input the P2P ID of IP camera.

## 11. NVR SYSTEM SETUP

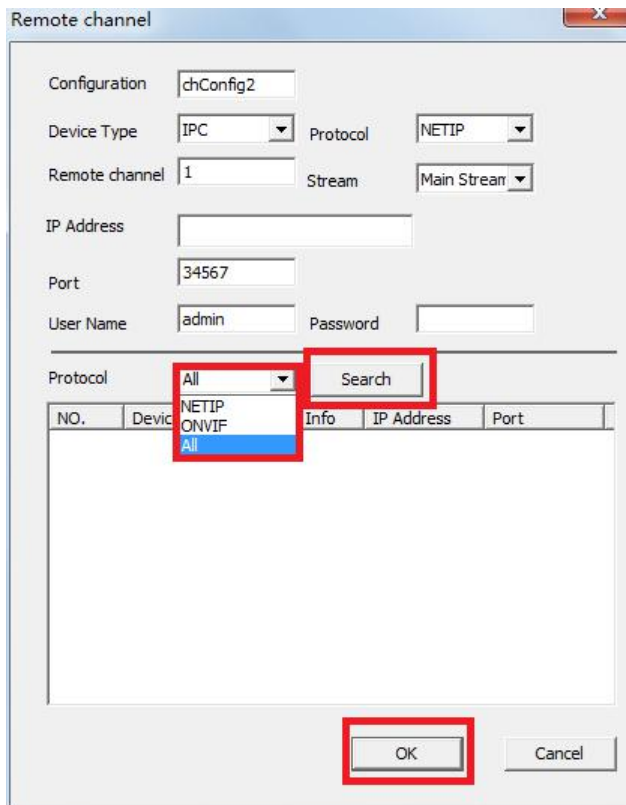


11.1 Set up the NVR the same way as IP camera in DeviceManager;

11.2 add IP cameras to NVR in CMS PC client : click Setting-Advanced-Digital Channel, click Enable-add;



11.3 Choose Protocol ALL (NETIP is for Ctronics IP cameras, ONVIF is for other brands which is compatible with ONVIF protocol), choose the IP address you want to add into this system, click OK.



NOTE: You can do it by the same way in IE browser also.

**It is normal that the camera will get a little hot under working ,but not effect the function ,**

**We all do Comprehensive lightning protection, in line with national and international standards; 7 \* 24 hours 65' C high temperature stable and reliable testing (including mounted machine testing)**

If you have any problem of our products ,pls send us emails [info@geniuspycam.com](mailto:info@geniuspycam.com)